

# Honeybourne Village News



Info : Local : News

April 2026



## HARMONY NAILS & BEAUTY

MOBILE BEAUTY THERAPIST



COVERING EVESHAM & SURROUNDING  
AREAS

Call Helen  
0781 506 3541



## Millinery Matters

**Handcrafted individual hats &  
headwear**

- Special occasion hats
- Cocktail hats & fascinators
- Unique bridal headwear
- Hat re-trimming service
- Hat stretching & repairs

For all your hatting needs contact  
**Annie**

07810 204719

[annie@millinerymatters.co.uk](mailto:annie@millinerymatters.co.uk)

[www.millinerymatters.com](http://www.millinerymatters.com)  
South Littleton

## PICTURE FRAMING SERVICES



**PHIL RAINEY**

TEL: 01386 833505

MOB: 07969 620555

E-mail: [phil@fill-the-frame.co.uk](mailto:phil@fill-the-frame.co.uk)

45 School Street

Honeybourne

WR11 7PL

Facebook @ FILL the FRAME

## Welcome to Spring and April 2026

We wanted to open this month's issue with some more **good news** — and this time with some close-to-home sporting success!



In February, Honeybourne's own **Liam Elliott** (17) travelled to the Netherlands to compete in world's largest darts competition - The Dutch Open. The event welcomes professionals and amateurs alike, and Liam performed brilliantly, finishing 256<sup>th</sup> out of 4,048 in the Open event, and 64<sup>th</sup> out of 256 in the U18 age group.

Liam, known as **'The Gentle Giant'**, started playing darts at The Gate Inn in 2022 and now plays for their team twice a week. He plays in multiple competitive darts leagues, including the Amateur Darts Circuit (ADC) and the Professional Darts Corporation (PDC) Development Tour, as well as representing the Worcestershire County Youth team.

It has been a fantastic season for Liam so far, with wins at the Kineton Open in December, and on the ADC circuit, as well as high finishes on the PDC Development Tour. Liam would like to say a huge thank you to his sponsors: Soudal UK, The Gate Inn,

Dave Honey and Evesham Darts Competitions, saying, without them, none of his success so far would have been possible.

His next big event is a PDC fixture, 24<sup>th</sup>-26<sup>th</sup> April and we wish him **GOOD LUCK!**

*Village News Team*



### Contact details for the HBVN:

Comments & contributions e.g. photo's around the village or area, jokes or puzzles , ideas for the Spotlight On... feature, articles, letters to the editor. [editor.hbvn@gmail.com](mailto:editor.hbvn@gmail.com)

**ALL ARTICLES OR ARTWORK MUST BE PROVIDED READY FOR INCLUSION AND PRINT USE**

**A5 WORD, JPEG, PNG OR PREFERABLY POST INFO DIRECTLY INTO EMAIL**

**Deadline date for inclusions in 2026 is the 17:00hrs on 17th of the month**

## Love your village – Community Litter Picking

On a dry pleasant Sunday morning twenty two adults and children arrived at the village hall to arm themselves with high visibility vests, litter pickers and sacks to help clear litter in and around the village.

Litter picking was divided into manageable rounds that could be completed within two hours. Following the work drinks and cakes were available at the village hall.

Around fifteen bags of litter were collected and were deposited at the village hall ready for collection by Wychavon District Council. The District Council provided all equipment for the litter picking event. Thanks to them for providing kit and removing the bags of litter and to Honeybourne Parish Council for helping organise the event allowing the use of the village hall and providing refreshments.

It goes without saying that thanks go to the volunteers who gave up their time to get involved and remove litter that is deposited around the village.

Another litter picking event will take place in September so if you want to get involved lookout on Facebook and the village notice boards for further information later in the year.



## LADIES WALKING GROUP!

Walking Keeps You Fit. Join our walking group and make new friends.  
We do a two-mile walk on Monday, Wednesday, and Friday mornings.  
For more information, call Ann on **01386 830517**



*We look forward to seeing you.*

## Mobile Library Timetable

The **Mobile Library** on the 4th Friday in the month as follows:  
**12.05-12.20** Grove Avenue **12.25-12.40** Perrie Drive **13.15-13.30** Village Hall  
Enquiries: **01905 822722** or emailing [mobilelibraries@worcestershire.gov.uk](mailto:mobilelibraries@worcestershire.gov.uk)

### Wednesday over 60s Club

Our Meeting in March was our AGM, where we reviewed the past Year, which we are pleased to say was a reasonably good one. We had some lovely trips, speakers and activities throughout the year and this was rounded off by our annual Lunch in February. We would like to say a big 'Thank You' again to Sylvia Matthews who has now stepped away from providing our refreshments. Don't worry we have a plan in place to ensure teas, coffee and cake will still be available going forward.

In the year ahead we will be continuing to have our trips out and more guest speakers, so watch out for more details throughout the year. New members are always welcome, so why not pop along, meet and make new friends, as always, we would love to see you.

The Club meet on the first Wednesday of the month, our next meeting our will be on 4<sup>th</sup> April, at the Village Hall @ 2.30pm, where our Guests will be the Badsey Sea Shanty Group.

### Honeybee's W.I

Honeybees WI meet on the 3rd Monday of the month at Honeybourne village hall.

Anyone wishing to join us will be most welcome.

For more information see our Facebook page or telephone 01386830517.



## Parish Council News

I am pleased to report that March has been a busy and productive month for Honeybourne Parish Council, with a number of important community activities taking place.

### Community Litter Pick

On 1st March, Honeybourne held its community litter pick and I am delighted to report that it was a great success. I would like to extend my personal thanks to Trevor Askew for organising the event, to all the volunteers who gave up their time, and to the councillors who came along to take part. Your efforts in keeping our village clean and tidy are very much appreciated and make a real difference to Honeybourne.

### Local Government Reorganisation Consultation

The Parish Council has formally submitted its response to the Government's consultation on local government reorganisation in Worcestershire, ahead of the 26th March deadline. The Council voted unanimously to strongly support the Transforming Worcestershire proposal, which would create a South Worcestershire unitary authority covering Malvern Hills, Worcester and Wychavon. The Council also voted to strongly oppose the One Worcestershire proposal for a single countywide authority. We believe the two-council model keeps decision-making closer to communities like Honeybourne and better reflects the character and needs of our area.

### Neighbourhood Development Plan Review Survey

Earlier this month the Parish Council launched its Neighbourhood Development Plan Review survey and we are grateful to all residents who took the time to complete it. The survey closed on 31st March and the responses are now being carefully analysed. The information gathered will play an important role in shaping the updated Neighbourhood Development Plan for Honeybourne and we look forward to sharing more details with residents in due course.

Cllr Heath Jobs

Chair of Honeybourne Parish Council

<b>Members of Honeybourne Parish Council</b>			
<b>Heath Jobs (Chair) 07375085116</b>			
<b>Balbir Dubb (Vice-Chair) 07795670707</b>			
Andrew Attridge	01386 830744	Amy Mathias	07956076271
Graham Clelland	01386 832500	Stephen Sidwell	07815311432
Colin Clear	07702105737	Sandra Walsh	07714237336
Judith Mellor	07770983522	-	
Clerk contact details: Mobile: 07951 429652 <a href="mailto:clerk@honeybourne-pc.gov.uk">clerk@honeybourne-pc.gov.uk</a>			

# HONEYBOURNE COMMUNITY *coffee morning*

HONEYBOURNE VILLAGE HALL | EVERY THURSDAY 9.30 - 12



COFFEE/HOT CHOC £2  
TEA £1.50



CAKE £1.50



MEET FRIENDS &  
MAKE NEW FRIENDS



BORROW A BOOK



Come along for a  
cuppa, a slice of  
cake, and a good  
old natter.

We look forward  
to seeing you!

## Pet Portraits by Ella



Beautiful pencil drawings to capture your beloved fur baby. Whether its for a gift or for yourself, it's a wonderful way to cherish a pet forever. Perhaps it's a memory of a long-lost friend, a loyal companion or a recent new addition to your family. What ever the occasion let us help you to remember them always. For more information:

Email: [carolegraves@btinternet.com](mailto:carolegraves@btinternet.com) Tel: 07733 045103

## Spotlight on Caleb Brocks

In the last few months, I have got talking to a Caleb as he waits for his school bus and I walk my dog. We exchange a few words most days and he told us all more about being a teenager in Honeybourne .....



1. I know you attend Chipping Campden School, but where did you go to primary school?

I attended Honeybourne Primary School

2. What are your best memories of primary school?

My best memories of primary school were the friends I made that I'm still friends with now. Also, my favourite teacher was Mr Ryan because he was cool and used to make lessons fun.

3. I know you support Liverpool Football Club - who is your favourite player and why?

My favourite football player is Virgil Van Dijk because he plays as a centre back which is also the position I play for the school team.

4. Have you ever been to Anfield, the home of LFC?

Unfortunately, I have never been to Anfield although, I would like to go one day.

5. What's the funniest football chant you have heard?

I know lots of football chants but not any I can really repeat as most are rude and may not be appropriate for the Village News. Football fans reading this will know what I mean

6. What is the best thing about living in Honeybourne?

I've grown up in Honeybourne so lots of my family and friends live here too so I get to see them daily. I also love that I get to go out and play football and rugby with my friends.

7. And what is the worst?

The worst bit is how busy the roads can be when walking to and from the bus, the cars fly past so I have to be careful when crossing the main roads.

8. What would be the one new thing you would like to have in the village?

To have proper football goals with nets up The Leys so my friends and I can play football—this would be a great addition for us older children.

9. What subjects do you enjoy most at school and what are your hobbies?

My favourite subjects at school are Art, PE and Geography.

I enjoy after-school football where I play for the school team and I also play darts (and sometimes play for the local darts team at The Gate) where my dad is captain of the team. I recently entered a junior darts competition where I got through to the quarter finals.

11. What are you thinking of doing when you finish school and what careers interest you?

I would like to do an apprenticeship when I leave school maybe in construction so I can learn a trade.

12. Finally, Caleb, thank you for always being cheerful and chatty in the morning. You really start my day with a smile. What's your secret to always being in a good mood?

Always being optimistic and positive!

*Thank you Caleb*



Honey Tots  
Baby & Toddler  
Group

# Honey Tots Baby & Toddler Group



**THURSDAYS, 9.30-11.30AM  
HONEYBOURNE VILLAGE HALL**

**Stay, play & weigh!**

**Bring your little one and their red  
book and get baby weighed.**

**Thursday 14th May  
Thursday 11th June**





# Dry Carpet & Low Moisture Upholstery Cleaning



dry-carpet.co.uk

Dry-Carpet



We now offer jet washing for your patios, drives and decks

- ✓ No drying time for carpets-can be used immediately after cleaning
- ✓ Suitable for all natural and synthetic carpets
- ✓ No risk to children, pets or those with allergies
- ✓ Low moisture upholstery cleaning to refresh your furniture
- ✓ Ideal for pet stains with built in deodoriser
- ✓ No risk of sticky residue

👉 Ideal for carpets with underfloor heating or floor power outlets  
**01386 662306 info@dry-carpet.co.uk**



### Contact Us:

07531 046597  
bespoke@aj-furniture.co.uk

[aj-furniture.co.uk](http://aj-furniture.co.uk)



**HANDMADE & BESPOKE**  
 FITTED INTERIORS  
 KITCHENS  
 FREESTANDING FURNITURE  
 Covering Worcestershire,  
 Warwickshire & The Cotswolds



## Gardening Tips for April

April is one of the busiest and most rewarding months in the garden. As the soil warms and daylight increases, plants begin to grow rapidly and there is plenty to do to set the garden up for the months ahead.

### Vegetable Garden

Sow hardy vegetables such as carrots, beetroot, lettuce, radishes and spring onions directly into prepared soil.

Plant early potatoes if you have not already done so. Earth up shoots as they grow to protect them from late frosts.

Start courgettes, pumpkins, sweetcorn and runner beans indoors or in a greenhouse ready for planting out in May.

Keep beds weed-free and lightly hoe the soil on dry days to prevent weeds establishing.

### Flowers and Borders

Sow hardy annuals such as cornflowers, nigella and calendula directly where they are to flower.

Divide overcrowded perennials to keep plants vigorous and to create new plants for other areas of the garden.

Feed roses with a balanced fertiliser and apply mulch around the base to retain moisture.

Keep an eye out for slugs and snails as young shoots emerge.

### Lawns

Begin regular mowing if growth has started, but keep the blades slightly higher early in the season.

Repair bare patches by lightly raking the soil, adding grass seed and keeping the area moist until established.

Apply a spring lawn feed to encourage healthy green growth.



### Greenhouse and Pots

Ventilate greenhouses on warm days to prevent overheating.

Prick out seedlings once they are large enough to handle and pot them on to encourage strong growth.

Start planting up containers and hanging baskets, but keep them protected from frost until later in the spring.

### General Jobs

Mulch borders with compost or well-rotted manure to improve soil and conserve moisture.

Install supports for climbing plants before they begin rapid growth.

Watch the weather forecast and protect tender plants from late frosts with fleece if needed.

With a little effort in April, your garden will be well prepared for a colourful and productive season ahead.

# Make every day **WILD**

## Season Passes for 2026 are now on sale



Buy yours now



Reformer + Mat + Live + Online

## Do you want to try Pilates?

STUDIO 113

Pilates will improve your posture, make those niggling aches and pains go away whilst strengthening your core and improving flexibility and mobility

Group Pilates classes are held at Honeybourne Village Hall on Mondays at 9am, Tuesdays at 6pm, Wednesdays at 8.45am & Thursdays 6.30pm.

PLUS!! We now we have a men's class on Wednesdays at 7 pm

1 on 1 reformer and Group Reformer+ classes are held in our well equipped studios in Mickleton

Scan To See our Reformer+ Studio

nicky@studio113.uk - 01386 662306 -  
07570 023535 - www.studio113.uk





THATCHED TAVERN

· Honeybourne ·

www.thatchedtavern.co.uk

# APRIL 2026

## Easter Weekend

3<sup>rd</sup> April-6<sup>th</sup> April



Join us for live music, Spring specials & family fun!

Easter Sunday we will be offering an extended lunch service & dog-friendly tables



## Fish & Chip Tuesdays

Every Tueaday  
Two portions of our fish & chips  
for £25.00!

## £10.00 Pizza!

Monday- Friday  
12pm - 6pm

On takeaways and dining in.  
Must be ordered before 6pm.  
This is applicable on any main menu pizza.



## Quiz Night



Sunday 26th April  
7:30pm

## Live Music

Friday 3<sup>rd</sup> April  
7:30pm  
Friday 17<sup>th</sup> April  
7:30pm



BOOKINGS@THATCHEDTAVERN.CO.UK  
01386 834273

FOLLOW ON OUR SOCIALS TO KEEP UP TO DATE WITH OUR LIVE ENTERTAINMENT & SEE OUR MOUTH WATERING FOOD!



@thatched\_tavern



ThatchedTavernHoneybourne

# A J HICKMAN ELECTRICAL

E: ajhickmanelectrical@aol.com

As a business our aim is to provide a **high quality** service so our customers receive **top quality** install and satisfaction on the whole service at a very **competitive price.**

- New Build Installs
- Rewires
- Fuseboard Upgrades
- Additional Power Points / Lights
- External Lighting
- Any Aspects of Electrical Work
- Additional BT Points
- Additional TV Points

Electrical Safety Register

incorporating  
ELECSA + ECA  
Certification Ltd



TEL: 01386 831258

MOB: 07976 052828

## 🏠 GLM Property Maintenance

- Traditional Window Cleaning
- Dry Stone Walling
- Fascias & Gutters (Repairs & Renewal)
- Driveways & Patios (Installation & Cleaning)
- Roof & Solar Panel Cleaning
- Power Chimney Sweeping
- Cowl/Pot Fitting and Repointing
- Roofing & Flat Roofing
- Fencing & Landscape Gardening
- Rendering
- Hedge & Tree Cutting
- Rubbish Removals
- Painting Interior/Exterior
- Garden / House Clearances
- And much much more

No job is too big or too small!

Call for a free quote today!

**07399 024702**

[GLMServices18@gmail.com](mailto:GLMServices18@gmail.com)

Fully Insured

Registered Waste Carrier

We're on Yell.com 

Like us on Facebook  @GLMServices18



# Blocked Ears?

EAR WAX can be troublesome, causing sudden hearing loss, discomfort and itchiness - but it can be easily removed at the Cotswolds' friendliest treatment clinic located near Blockley.

# The Willows

**NORTH COTSWOLDS EAR HYGIENE CENTRE**

Unit 47, Northwick Business Centre  
Blockley, Moreton-in-Marsh, GL56 9RF

Book Online: [www.earhygienist.co.uk](http://www.earhygienist.co.uk)

Phone: 01386 701650

[Issy@earhygienist.co.uk](mailto:Issy@earhygienist.co.uk)

## Evergreen Garden Maintenance

Mowing, Hedge Cutting  
Tree Pruning, Turfing etc.

No job too small.  
References available.

Garden Clearance Service.

**FOR A FREE QUOTE**

Please phone Tony

T: 01386 854797  
M: 07752  
613814



**CAMPDEN HOME NURSING**

1990 **35** 2025  
YEARS

of hospice care at home

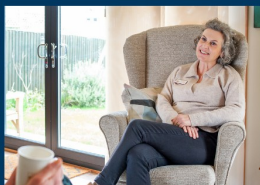
## DID YOU KNOW LOCAL CHARITY CAMPDEN HOME NURSING PROVIDES HONEYBOURNE RESIDENTS...?

**WEEKLY LOTTERY**



A Little Play, a Lot of Care

- **End-of-life nursing care** and support in people's own homes by dedicated nurses
- **Bereavement counselling** and support for adults and teenagers
- **Play therapy** for children aged 4 - 13
- **Wellbeing activities** and community workshops
- **Volunteering opportunities** at our charity shop, gardening or support at Jecca's House




Join our weekly lottery for just £1 per week to win £250,000 and support us!

01386 840505 [info@campdenhomenursing.org](mailto:info@campdenhomenursing.org)

[www.campdenhomenursing.org](http://www.campdenhomenursing.org) Charity 1178423





WHEN DID  
YOU LAST HAVE  
A FINANCIAL  
HEALTH CHECK?

## Would you know if:

- You could have a capital gains tax liability?
- You could access your pensions flexibly?
- Your pension fund is under performing?
- Your investments are providing the best return?
- You have an inheritance tax liability?
- You have sufficient cover in place to protect loved ones?

With a financial health check you could get the answers you need.

For a **FREE**, no obligation financial review, please contact me to arrange a suitable time for us to meet.

I'm happy to have initial discussions on the phone, via video call or face to face.

**Karl Thorpe** BA(Hons), DipPFS  
Independent Financial Adviser

m. 07879 466385

e. [karl.thorpe@afhgroup.com](mailto:karl.thorpe@afhgroup.com)

[www.afhwm.co.uk](http://www.afhwm.co.uk)

AFH Wealth Management is a trading style of AFH Independent Financial Services Limited, which is authorised and regulated by the Financial Conduct Authority, [www.fca.org.uk/register](http://www.fca.org.uk/register). Financial Services Register no. 216704. Registered in England and Wales. Company no. 04049780. Registered Office: AFH House, Buntford Drive, Stoke Heath, Bromsgrove, Worcestershire, B60 4JE. AFH Independent Financial Services Limited is a wholly-owned subsidiary of AFH Financial Group Plc (company no: 07638831). A5084-06/22-01

**AFH**   
wealth  
management

FUTURE EVENTS

\*\*Movie Night – Wicked – For Good  
18th Apr @ 7:30pm\*\*

\*\*Tai Chi class – starting in May – watch this space\*\*

\*\*Gin Tasting Event – Date to be confirmed ☺\*\*

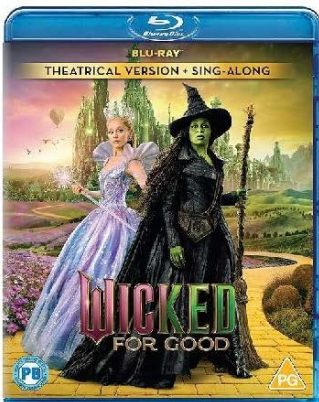
Monday	Tuesday	Wednesday	Thursday	Friday	Saturday	Sunday
Pilates with Nicky 9am – 10 am ~ Fitness with Jae 10:30am – 11:30am	Yoga with Jae 10am – 11 am	Pilates with Nicky 8:45am – 9:45am ~ Art Group 10am – 12:30pm	Coffee morning 9:30am-12:00pm ~ Embroidery Club 9:30 – 13:30 9 <sup>th</sup> Apr ~ Toddler Group 9:30am – 11:30am	Gente Yoga 9:45am – 10:45	Zumba with Lesley 9.30am-10.30am	
		Wed Club 2pm – 4pm 1 <sup>st</sup> April	Senior Stretch Class 1pm- 3pm			
Kids Theatre Group 3:45pm – 5:45pm				Healthy Worcestershire 2pm – 4pm		
WI – 20 <sup>th</sup> Apr 7pm – 10:00pm	Pilates with Nicky 6pm – 7pm	Men's Pilates with Nicky 7.00pm – 8.00pm	Pilates with Nicky 6:30pm – 7:30pm ~ Life Drawing 16 <sup>th</sup> Apr 7:45pm – 10pm	Short Mat Bowls Group 7.30pm-9.30pm		

All classes require booking to attend.



# Honeybourne Village Hall

## Apr Film Night



Saturday 18<sup>th</sup> Apr

Doors open 7pm

Tickets £5.00 pp

Refreshments and Raffle on the night

Tickets available on the night or online at

[www.honeybournevillagehall.org](http://www.honeybournevillagehall.org)

The cinematic cultural sensation returns with the epic conclusion to the untold story of the witches of Oz.

Elphaba and Glinda are now estranged, each living with the consequences of their choices. Elphaba (Cynthia Erivo), now demonized as The Wicked Witch of the West, lives in exile, continuing her fight to expose The Wizard. Meanwhile, Glinda (Ariana Grande) has become a glamorous symbol of Goodness, basking in the perks of fame and popularity.

As the angry citizens of Oz rise up against the Wicked Witch, Glinda and Elphaba must reunite and truly see each other - if they are to change themselves, and all of Oz. Bring home the adventure and prepare to be changed... for good.

PG



# Easter Services

## Good Friday

**11.00 am**

**Good Friday Service at Willersey Church**

**7.00 pm**

**Tenebrae Service of music and readings for  
Good Friday at Honeybourne Church**

## Easter Day

**9.00 am Holy Communion at Honeybourne  
Church**

**Please come and join us – you will be very  
welcome!**

## **St Egwin's Church, Honeybourne Annual Parochial Church Meeting**

The annual Parish Church Meeting will be held on 19th April 2026 following the 11.00 am service of Holy Communion

11.00 am – Holy Communion (Modern language), led by Rev Jon

12 noon – Annual Parish Church Meeting

Everyone is welcome to attend and hear about all that has happened in the last twelve months.

Please do join us.

## **Annual Plant Sale**

We look forward to seeing you at this year's popular Village Plant Sale!

We would be very grateful if you could kindly plant a few extra seeds now, and bring the resulting plants along for us to sell on the day.

All proceeds go towards the Friends Charity for upkeep of the church building.

Thank you. Date: Sat 6<sup>th</sup> June Time : 10am -12 noon




## **Ribbons for Remembrance**

This year we are planning to do Ribbons for Remembrance at the church.

Please find/save any ribbon you may have and watch this space for further information

Thank you.

## Church Services - April 2026

	Pebworth	Dorsington	Honeybourne	Willersey
 <b>3<sup>rd</sup> April</b> <b>Good Friday</b>			7.00 pm Tenebrae Service	11.00 am Good Friday Service
<b>5<sup>th</sup> April</b> <b>Easter Day</b>	11.00 am Holy Communion (Modern language)	11.00 am Family Service	9.00 am Holy Communion (Traditional language)	9.00 am Holy Communion (Modern language)
<b>12<sup>th</sup> April</b> <b>Easter 2</b>	11.00 am Holy Communion (Modern language)		11.00 am Family Morning Praise	9.00 am Holy Communion (Traditional language)  4.00 pm Prayer & Praise
<b>19<sup>th</sup> April</b> <b>Easter 3</b>			11.00 am Holy Communion (Modern language) & APCM	11.00 am All Age Service
<b>26<sup>th</sup> April</b> <b>Easter 4</b>	11.00 am Family Service & APCM			10.00 am Morning Prayer (Modern language)
<b>3<sup>rd</sup> May</b> <b>Easter 5</b>			9.00 am Holy Communion (Traditional language)	10.00 am Morning Prayer (Modern language)

### Sidesmen, readers and intercessors at Honeybourne:

	5 <sup>th</sup> April	12 <sup>th</sup> April	19 <sup>th</sup> April	3 <sup>rd</sup> May
<b>Sidesman</b>	Lesley O'Connell Edwards	Sylvia Matthews	Anne Magee	Anne Jones
<b>Reader</b>	Elizabeth Rose	Teresa Banks	Lawrence Schroeder	Teresa Banks
<b>Intercessor</b>	Minister	Mike Edwards	Minister	Minister

## Vicar's Letter, 'The Miracle of new Beginnings'

"I believe in Christianity as I believe that the sun has risen: not only because I see it, but because by it I see everything else" - C.S. Lewis

We're in the Easter Season, the clocks have changed and spring is well and truly in the air despite all the rain!  
The great need of our world is hope, hope in a different reality, hope that things can change for the better, hope that all will be well.

The great gift of Easter is Hope. Easter is not a memorial of a one-off event that happened over two thousand years ago. Easter is a celebration of opportunity constantly offered to us in the Risen Christ.

As Easter people, we celebrate the gift of New Life, and we are offered the choice of transformation! It's not only on Easter Day we rejoice in it, because in every hour of every day it is always offered to us. The gift of renewal, now and forever. Easter is the opportunity of choice; To journey in our aloneness, or to choose this day, this moment, to choose life in Jesus and the light, hope, faith, joy and transformation that brings!  
"Jesus Christ did not come into this world to make bad people good; He came into this world to make dead people live" - Lee Strobel

May we celebrate Christ with us this Easter, and every moment of every day!

An Easter Prayer:

This Easter as we celebrate the gift of New Life,  
we give thanks for the new Life we're given in the Resurrected Christ.

We give thanks for His transformative Love that renews His people in our churches and communities.

We hold before God all those across our world who long for the opportunity of new Life. We remember those who are oppressed, enslaved in circumstances beyond their control, living in war zones, facing terrorism, drought and famine, or victimised for their faith, their culture their ethnicity and their gender.

We remember those in displacement camps, refugee camps, those living on the streets; those with no healthcare, no security.

And we pray that our faith and belief in the reality of our Easter story will impact on the lives of those who suffer in our world,

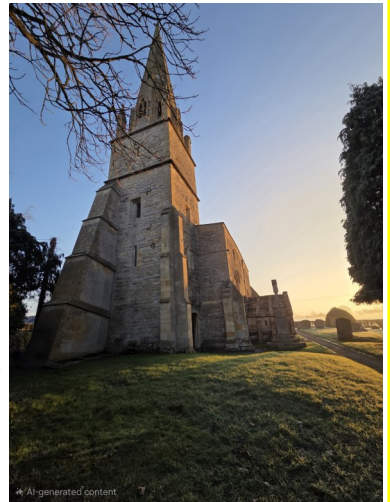
that they too may have hope and courage to believe that there is a different reality.

We pray for the global church that we may have the courage and integrity to truly live as Easter people.

Amen.

May you know joy, gladness and peace this Easter time.

Revd Jon Barwood, Tel: 07777 148880, Email: [jonbarwood@btinternet.com](mailto:jonbarwood@btinternet.com)



# Honeybourne Bereavement Café

An opportunity to meet others in a similar situation offering mutual support and friendship within a safe place.

**When: 1st Saturday of each month**

**Time: 9.30am-11.30am**

**Where: The Gate Inn  
Honeybourne, WR11 7QJ**

**Free of charge, inc. refreshments**



We are also offering a 7-week Bereavement Journey Course, dates to be confirmed.



[eveshamreferrals@svp.org.uk](mailto:eveshamreferrals@svp.org.uk)



0777 6827112

Kindly supported by Worcestershire CC and Wychavon Council



St Vincent  
de Paul Society  
England and Wales  
Turning Concern into Action



St Vincent de Paul Society (England & Wales): registered charity number 1053992  
A company limited by guarantee in England and Wales 3174679

## The Bereavement Café Honeybourne

A Bereavement Café is a welcoming, safe place for bereaved people to come and be with others in a similar situation. Free tea and coffee with biscuits and tissues! Yes, there will be tears but with laughter as well. It is a welcoming place where you can say what you really want to say without fear of being told to “get over it.” You could just come and say nothing and even that would be OK.

One guest told us they wished they could come every fortnight as they can say what they want and know it is in confidence. I feel safe here and everyone is so welcoming.

And if you don't yet feel comfortable talking about your loss then cake baking, growing tomatoes, or anything, are fine with us.

We also offer a seven-week course called The Bereavement Journey which helps guests to understand the journey they are going through and help them to feel more comfortable in the situation they find themselves in.

After completing a Bereavement Journey course in Droitwich one guest told us;

You will never know how much this has helped me. It hasn't changed anything but life is much more comfortable now.

Come and join us at the Bereavement Café on the first Saturday of each month at the Gate Inn, Honeybourne 9.30am to 11.30am. If you can't make it on Saturday mornings then come to Evesham Bereavement Café on the fourth Tuesday of each month at Wallace House in Oat Street, Evesham 10am to 12 noon. For those who live further afield Droitwich holds their Bereavement Café on the second Tuesday of each month at Rotary House, Corbett Avenue, Droitwich.

These drop in cafes, no need to book, are being organised by St Vincent de Paul Society and are open to anyone who would like bereavement support. We are not counsellors but do offer support in a safe and confidential environment and it is free of charge.

Contact us on  
[eveshamreferrals@svp.org.uk](mailto:eveshamreferrals@svp.org.uk)  
or talk or leave a message on  
07776 827112

A Warm Welcome is Waiting  
for You.



Peter

Worcester & Wychavon

bluebird  
care®

Helping your  
dad live his  
life. So you  
can *live yours.*

We're here so your loved one can stay home, where they want to be. Where things are safe and familiar and they have the best chance to live a full and meaningful life.

Whether it's everyday companionship or everyday errands, Live-in Care or Home Care visits, our highly-trained Care Experts will give your loved one the support they need to live in the place they feel best: home.

See how we can *support you.*

It's good to  
*be home*

Call us for a friendly chat on

**01386 575800**

Or email

worcesterandwychavon@  
bluebirdcare  
.co.uk

*Find  
out more*



# Martin Grinnell FUNERAL SERVICES

Evesham's only independent  
funeral directors



Over 30 years  
serving the local  
community



- Professional Personal Service
- 24 Hour / 7 Days a Week
- Home Visits
- Private Chapel of Rest

Please contact us at any time  
**01386 422233**

1 Bewdley Street, Evesham. WR11 4AD

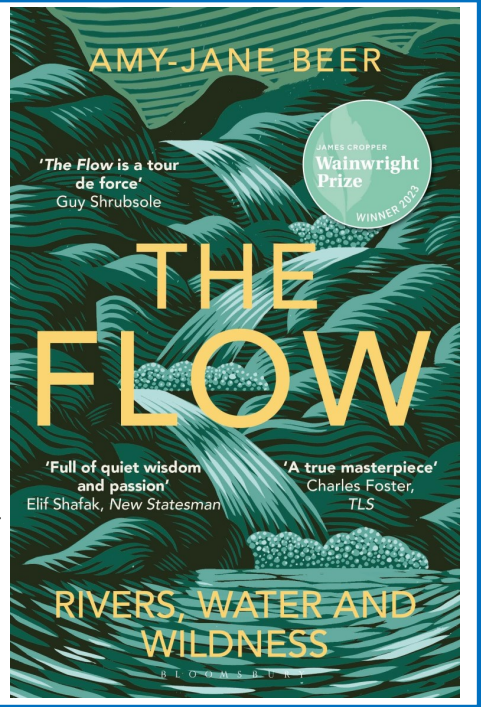
## The Flow—Book Review by Revd Craig

The Flow by Amy Jane Beer is a book that invites us to pause, reflect and wonder. Amy is a canonist, and her knowledge, love and appreciation of rivers is inspiring and provoking.

Through exploring various waterways and water shaped landscapes she brings our focus to whole systems, landscapes, individual creatures and plants. It is a book of shifting focus, moving our attention to variety of subjects and places. A book of related essays woven together that makes a seductive and informative read that shakes us from our torpor - we neglect water at our peril.

This beautiful book makes us mindful that although abundant, water is precious. It is vital for our well-being, for life and health.

Water is a gift that we should notice, appreciate and cherish.



## HONEYBOURNE ROOFING

ROOF REPAIRS—NEW ROOFS—LEADWORKS  
GUTTERING—DOWNPIPES—CHIMNEY WORKS  
UPVC FASCIA AND SOFFIT REPLACEMENTS  
VELUX WINDOW INSTALLATIONS

CONTACT MARK FOR YOUR FREE ADVICE AND  
ESTIMATE

07597 380773

honeybourneroofing@gmail.com  
honeybourneroofing.com

## Fundraiser For Ellie Sullivan



This is Ellie Sullivan, who owns a beauty salon in Broadway, Worcestershire. Recently, she was diagnosed with an aggressive form of cancer whilst raising money for Cancer Research.

Funds are being raised to ensure her family and business do not suffer. Please consider donating towards Ellie's cause.



gofundme



## V is for Vestments

For church services, the priest who leads the service will wear special garments which are known as vestments. These have special names, derived from earlier times. Different priests use different items, according to their preference.

Very often s/he will wear a long white garment, known as an ALB. It is floor length, and is usually worn with a rope girdle around the waist. Over this s/he can wear a STOLE, which is a long narrow silk scarf, reaching to around the knee. The lower parts are often beautifully decorated, either with Christian symbols, or to reflect a biblical theme: s/he will be only too happy to explain what the decoration is, so do ask. The colour of these usually matches the altar frontal. However, some vicars may wear a black PREACHING SCARF instead: the bottom may be decorated, too.

Alternatively, the priest may wear a CASSOCK, which is a long closely-fitting floor length black garment, which is buttoned all down the front. (Bishops may wear a purple one.) Over this s/he may wear a SURPLICE, which is a very full white garment, with long sleeves which reaches below the hip.

Priests on TV dramas who are taking a service in church are usually shown wearing a CHASUBLE. This goes on the top of the other garments, covering both body and arms, and can be highly decorated. Its background colour usually matches that of the altar frontal. It is only used in Holy Communion services.

*By Lesley O'Connell Edwards*

## Public rights of way (PROW's) in and around Honeybourne.

Maybe now isn't the time to be thinking about walking in the countryside (apart from you hardened seasoned walkers). Given the horrendously wet weather we've experienced. On a positive note, we are nearly in Spring when the sun will shine there are lots of opportunities to explore the countryside which we are lucky to have in and around the village.

Public rights of way are the management responsibility of Worcestershire County Council.

However, to ensure that users can access the routes without encountering nettles, long grass, broken branches there is a team of volunteers in the village who carry out maintenance on behalf of the County Council. The team is fortunate to have tools and equipment which has been provided by the Parish Council and the County Councillors Community fund, so they are well equipped to carry out what maintenance is required.

The PROW volunteers meet once a month on the last Sunday of the month. This can change dependent on weather conditions, bank and school holidays. Recent work has included installing a metal gate to the Leys path and installing a wooden bridge crossing on the path adjacent to Maple Close. Regular strimming and cutting back of vegetation is carried out.

Details of walks will be included in future editions of the village news.

If you would like to join the group of volunteers to help maintain the rights of way you will be very welcome.

Email [trevoraskew@hotmail.co.uk](mailto:trevoraskew@hotmail.co.uk) with your contact details





Part of the Tesco Group

40 Stratford Road, Honeybourne, WR11 7PP

Tel: +44 7721277323

➤ One Stop Hours	Monday -Saturday	7 am - 10 pm
	Sunday	8 am - 8 pm
➤ Post Office Hours	Monday -Friday	7am - 5 pm
	Saturday	8 am- 1 pm
	Sunday	Closed

- Deposit Cash & Cheques directly to your bank: Free cash withdrawals: Get your money to travel card for your holidays: Pick up your foreign currencies, and many more services.
- Amazon Hub -Pick up your Amazon deliveries from here & drop off your returns.
- DPD Collection & Delivery.
- Great deals on Beers, Wines and Liquor: Birra Moretti 10 pack £13 : Budweiser 10 pack £12 : Budweiser 20 pack £17.50 : Bud light 10 pack £8 : Corona 12 pack £15 : Carlsberg Pilsner 18 pack £13 : San Miguel 10 pack :£13 : Madri Excepcional 10 pack £15 : Thatchers Gold 10 pack £10 : Cruzcampo 10 pack£14 : Stella Artois 18 pack £18 : Carlling 18 pack £17.50 : Coors 18 pack £17 : Inches Chider 10 pack £12 : Strongbow Original Cider 10 pack £10.75 : Any 3 x 660ml Beers £6.50 : Any 3 x pre-mixed £6.50: Cider 3 x £6.50
- Coffee Machine : All drinks £2.49: Slushy's: £1.99
- Local products include Cotteswold Milk : Norths Bakery Bread, Knights Provisions Bacon
- Bennett's Ice Cream : Flavour & Fire Sauces & Seasoning.
- Meal Deal for £4, Sandwich, Baguette or Pie + Drink + Snack.
- Safe, colourful, and fun-perfect for your little explorer!



SUPPORT YOUR LOCAL



Home Care in the Community

Support with personal care  
and medications

Domestic help and companionship

Contact Telephone: 01386765102

[info@medistaff24.co.uk](mailto:info@medistaff24.co.uk)


[www.medistaff24.co.uk](http://www.medistaff24.co.uk)



## CONSTRUCTION & GROUNDWORKS

 07497 950 391

 [hello@bascontracting.co.uk](mailto:hello@bascontracting.co.uk)

 [Bilbrough\\_and\\_sons\\_ltd](https://www.instagram.com/Bilbrough_and_sons_ltd)

 BAS Construction

### ***MWS Aerial & Satellite*** ***Tel: 01386 833342***

- Freeview
- Freesat
- Radio and DAB
- Additional TV Points
- Additional Telephone Points

Free advice and quotations

CAI Member C. 1559

Member of the Worcester Trader  
Register

[www.mws-aerial-satellite.co.uk](http://www.mws-aerial-satellite.co.uk)

***email: [info@mws-aerial-satellite.co.uk](mailto:info@mws-aerial-satellite.co.uk)***

### *Bella Hair*

---- Unisex Salon ----

34A High Street, Honeybourne,  
WR11 7PQ

Janette and Charlotte look  
forward to meeting you!

Appointments - 01386 833470



*the Fleece Inn*



## *April at the Fleece Inn*

Wed 1 April, 8pm - Fleecey Folk: Suntou Susso, £17

Sun 5 April, lunchtime - Easter Sunday Morris

Thu 9 April, 7.30pm – April Spring Ceilidh, £10 (£5)

Fri 10 to Sun 12 April – Sing in the Spring

Sun 12 April, 8pm – Fleecey Folk: Charlie Dore, £18

Thu 16 Apr, 8pm-Fleecey Folk: Hartwin Dhoore & Ross Grant, £17

Sat 18 April - Asparagus Express, GWR Broadway

Mon 20 April, 6.15pm - Flavour of the Fleece Taste & Tour, £38

Tue 21 April, 6.30pm – Pottery at the Pub, £30

Thu 23 April AM - Asparagus Festival Launch

Thu 23 April PM - St George's Day Morris

Tue 28 April, 8pm – Fleecey Folk: Ruth Eliza, £17



Open all day. Food served Mon-Sat 12-2.30 & 6-9pm, Sun 12-8pm

Folk Session every Thursday, all welcome.

Celtic Folk Session 3<sup>rd</sup> Wednesday, Sunday Folk on 2<sup>nd</sup> Sunday.

The Fleece Inn, The Cross, Bretforton, Worcestershire, WR11 7JE

01386 831173 [info@thefleeceinn.co.uk](mailto:info@thefleeceinn.co.uk) [www.thefleeceinn.co.uk](http://www.thefleeceinn.co.uk)

# CPB PLASTERING

All aspects of plastering work:

Boarding, skimming,  
rendering, screeding

Call **CARL BENFIELD**

Tel: 01386 831673

or 07717 201 950

*Email: c-benfield@sky.com*

## SECURE & CONVENIENT STORAGE IN THE HEART OF THE COTSWOLDS

-  **CONTAINERS DESIGNED FOR STORAGE**
-  **8X MORE AIRFLOW**
-  **EASY OPEN DOORS**
-  **24/7 ACCESS + CCTV**

 **ASK ABOUT LONG TERM DISCOUNTS**



*Your Trusted Partner for Secure, Flexible & Local Storage Solutions*

[www.cotswoldcontainerstorage.com](http://www.cotswoldcontainerstorage.com)  
sales@cotswoldcontainerstorage.com  
01789 330668

Concrete Works - Bretforton Road  
Weston Subedge WR11 7QL



## fairview

Your Local Builders Merchant

- Building Supplies
- Landscaping Supplies
- Sleepers
- Fencing
- Large range of aggregates
- Large Stock of paving & Walling
- TopSoil, Soil Improver
- Mushroom Compost & Bark
- Electrical & Plumbing Supplies
- Timber
- Decorating Supplies
- and much, much more

 **01386 833001**

BUCKLE STREET, HONEYBOURNE, EVESHAM, WORCES. WR11 8QE  
[WWW.FAIRVIEWTRADING.CO.UK](http://WWW.FAIRVIEWTRADING.CO.UK) | [WWW.FAIRVIEWLANDSCAPINGSUPPLIES.CO.UK](http://WWW.FAIRVIEWLANDSCAPINGSUPPLIES.CO.UK)

# Merstow Green Funeral Home



Kevin Bowen

Philip Tomlins

Martyn Jeynes

## Proudly serving the Vale of Evesham and North Cotswolds since 2008

Merstow Green Funeral Home are here to support and guide you. We offer a friendly and professional service to families

### Evesham

**01386 49903**

20 Merstow Green  
WR11 4BD

- 24 - hour service
- Bereavement advice
- Home visits
- Private chapels of rest
- Floral Tributes
- Memorial Masonry
- Prepaid funeral plans

**Call us for immediate support, advice or to  
arrange a home visit or to find out more about  
our prepaid funeral plans.  
We are here to help 24 hours a day.**



[www.merstowgreen.co.uk](http://www.merstowgreen.co.uk)



## Prehistoric Ballet and a Numbers Game by Honey Wildbourne

Somewhere relatively close by there must be a heronry. Grey Herons (*Ardea cinerea*), generally solitary, territorial hunters become highly social and gregarious during the spring breeding season, coming together to nest in heronries. I've seen several flying over Honeybourne in the last few days.

There's something of the impossible about the sight of a Grey Heron in flight. The slow, slow wing beats, the "S" bend of the neck and the long, trailing legs all together give their stately progress across the sky the impression of some primeval bird viewed in slow motion. To see two Herons together

performing an aerial mating ritual takes this "impossible" to the surreal. This involves dramatic manoeuvres, seemingly choreographed, with rapid swooping and circling in tight formation, followed by high-speed chasing and the occasional clashing of beaks. They seem too big to remain aloft whilst performing this "prehistoric" ballet.

Their ability to remain in the air, employing such slow deliberate wing beats, is due to their low wing loading – an expression applied not only to birds but to aircraft. In

other words, Grey Herons have a large wing area for such relatively light birds. To be exact, on average, they only have to lift around 4 kilos for every square metre of wing area. In the world of birds, the lowest of low wing loads is boasted by the Frigatebird – very light, massive wings! This denizen of tropical and subtropical oceans can remain in the air for months at a time, using very little power to do so.



On the other end of the wing loading scale is the Mute Swan (*Cygnus olor*) having a whopping 14 kilos to lift per square metre. So graceful and serene when sailing along in water, these birds need lots of space and a great deal of effort to take off, running and vigorously flapping for twenty or thirty metres just to get off the ground.

Should you ever see a Grey Heron take off it is quite a different sight. Following a slight bend of the knees and the unfurling of its large wings, with one or two beats, the bird is airborne in seconds. During courtship, the ratio of weight to wingspan is the magic, mathematical formula that allows them to dance in the air in a spectacular pas de deux.



## Your Local Team

The team is known as the Evesham and Pershore Rural Safer Neighbourhood Team. The team have 2 Facebook pages, 'Evesham Police' and 'Persnore Police'. Please follow these to keep up to date with our activities and to see when our local drop in/engagement sessions are. Your local Neighbourhood Police Officers are PC Alex Prentice and PC Shaquille Lakin. Your local Police Community Support Officers are, PCSO Jasmine Hill, PCSO Lee Stirling, PCSO Kyle Westwood and PCSO Karen Kempton. The email addresses for each of them are [first.surname@westmercia.police.uk](mailto:first.surname@westmercia.police.uk). Karen will be leaving the team shortly as she'll be taking up a new role within West Mercia.

## Drop-In Sessions and Neighbourhood Matters

Drop-in sessions are held weekly around the patch. If you have anything you wish to discuss, please pop along to one of these sessions. These sessions are advertised on the Evesham and Pershore Facebook page as well as Neighbourhood Matters. Neighbourhood Matters is a free service which allows you to receive updates regarding crime in your area and also allows you to message your local officer. Take a look at the website for further information: <https://neighbourhoodmatters.co.uk/>.

Please feel free to come to any session you see advertised, you do not have to live in the village to attend. If you know people who do not have access to the internet, please feel free to share the information. The more people who know about these drop-ins, the better!

## Reporting Incidents

Please remember to report crime and any incidents via 999, 101 or on the West Mercia website. Please do not email/ring/text individual officers if a crime has happened, this needs to be reported officially through the correct channels.




## Wills, Trusts, Lasting Powers of Attorney and more!



Over 10 years experience. Full member of the highly regarded and globally recognised Society of Trust and Estate Practitioners (STEP).

**Fixed fees & fully insured**

Call **Michelle** on **07516298125** or email **[michelleestateplanner@outlook.com](mailto:michelleestateplanner@outlook.com)**



# Cotswold Pet Cremation

**At Cotswold Pet Cremation we promise a personal and individual pet cremation service.**

We treat every single animal as though they are a member of our own family; with care, respect and compassion.

Our approach is professional and personal in equal measures and we promise only individual cremations, thus ensuring the ashes safely returned are solely those of your pet.

We offer a trustworthy and safe pair of hands and we welcome you to bring your special pet to us directly when the sad time comes; this way, you can be reassured that you know exactly where your beloved pet is being looked after, and, also know the journey that brings them here; something we would want to know ourselves.

We understand how important it is for you to trust us with your pet, your memories and your friend.

Located just 5 minutes from Honeybourne, we are ideally placed to serve the local community.

Mobile: 07946 052 941 Landline: 01386 247 395  
Lower Fields House, Weston Road, Bretforton, Worcestershire, WR11 7QA

[www.cotswoldpetcremation.co.uk](http://www.cotswoldpetcremation.co.uk)





**Your local friendly garage**

**For Servicing and Repairs to all Vehicle Makes  
Cars to Light Commercial Vehicles**

**Batteries • Tyres • Exhausts  
Wheel Balance • Wheel Alignment  
Diagnostics • Puncture Repairs  
And Much More!**

**Give us a call or drop in and see us.  
We are here to help you safely on your journey.**

**T: 01386 832157**

**The Old Brickworks  
Buckle Street  
Honeybourne  
Evesham WR11 8QE**



**Opening hours**

**Mon to Fri: 8am - 6pm**

**Sat: 8am - 1pm**