

Honeybourne Village News



Info : Local : News

June 2026



HARMONY NAILS & BEAUTY

MOBILE BEAUTY THERAPIST



COVERING Evesham & SURROUNDING
AREAS

Call Helen
0781 506 3541



Millinery Matters

**Handcrafted individual hats &
headwear**

- Special occasion hats
- Cocktail hats & fascinators
- Unique bridal headwear
- Hat re-trimming service
- Hat stretching & repairs

For all your hatting needs contact

Annie

07810 204719

annie@millinerymatters.co.uk

www.millinerymatters.com
South Littleton

PICTURE FRAMING SERVICES



PHIL RAINEY

TEL: 01386 833505

MOB: 07969 620555

E-mail: phil@fill-the-frame.co.uk

45 School Street

Honeybourne

WR11 7PL

Facebook @ FILL the FRAME

Welcome to June 2026

Is it really June already? 2026 is flying by, with summer fast approaching and another school year almost finished. With that in mind, here are a few upcoming local events that we hope might offer inspiration for some fun summer plans!

The Three Counties Food and Drink Festival is returning to the Three Counties Showground on July 25th and 26th. Guaranteed to offer some fantastic flavours, this family-friendly weekend hosts activities for kids and promises to be a must-visit for foodies of all ages. Tickets start at £12.

For animal lovers, the hugely popular Mayhem of Mad4animals event at Worcester Woods Country Park offers a fun-packed day of discovery, featuring creatures great and small. The day includes a show followed by an interactive session with animals, perfect for families. Summer holiday dates are July 30th and 31st, tickets are £7.50 and babies enter free.

Usually closed to the public, Croome Panorama Tower will open to visitors on July 25th and September 14th. The open days include a pleasant walk to the tower and an opportunity to go inside the, climb to the top, and look out across miles of countryside. Guests must register but the event is free of charge and is dog friendly.

We hope you are looking forward to these local summer activities as much as we are. Now let's all keep our fingers crossed for some summer sun...

All the very best from the Honeybourne Village News Team.

Contact details for the HBVN:

Comments & contributions e.g. photo's around the village or area, jokes or puzzles , ideas for the Spotlight On... feature, articles, letters to the editor. editor.hbvn@gmail.com

ALL ARTICLES OR ARTWORK MUST BE PROVIDED READY FOR INCLUSION AND PRINT USE

A5 WORD, JPEG, PNG OR PREFERABLY POST INFO DIRECTLY INTO EMAIL

Deadline date for inclusions in 2026 is the 17:00hrs on 17th of the month



Honeybourne Village Fete

Saturday 18th July, 11am-3pm

The Leys Playing field

Fun dog show

Chilli Eating Comp

Childrens Games

Grand raffle

Bouncy Castle

Craft stalls

Produce show

Tombola

Dog Show Classes - Waggiest tail, Prettiest female, Handsome Lad, Golden Oldie, Child Handler, Fancy Dress, Best treat catcher, Best Rescue, Cheekiest Puppy.

Produce show classes - Best Adult Bake, Best Child Bake, Flower Display, Vegetable Animal (Under 12yo), Best preserve jam/marmalade/churney.

Raffle Prizes & Tombola items wanted. Please get in touch if you can help! honeybournevillagefete@outlook.com

Village Tombola collection week commencing 6th July 2026

LADIES WALKING GROUP!

Walking Keeps You Fit. Join our walking group and make new friends. We do a two-mile walk on Monday, Wednesday, and Friday mornings. For more information, call Ann on **01386 830517**



We look forward to seeing you.

Mobile Library Timetable

The **Mobile Library** on the 4th Friday in the month as follows:

12.05-12.20 Grove Avenue **12.25-12.40** Perrie Drive **13.15-13.30** Village Hall

Enquiries: **01905 822722** or emailing mobilelibraries@worcestershire.gov.uk

Wednesday over 60s Club

Our May meeting was held on sixth. Unfortunately, our Guest speaker couldn't make it, so instead we had a lovely afternoon playing games and catching up with friends. On concluding business matters, we rounded the afternoon off with Tea, Coffee and Cake, and our usual monthly raffle.

Our next Trip is planned for 15th July, when we will be visiting Rugby Garden Centre. The trip cost will be £15 and non-members are welcome. If your interested is coming on the trip, then please call Pam on 07966 871862.

The Club meet on the first Wednesday of the month, our next meeting our will be on 3rd June, at the Village Hall @ 2.30pm. New members are always welcome, so why not pop along, meet and make new friends, as always, we would love to see you.

Honeybees W.I. April Meeting

Our theme this evening is on Bee Keeping , and Luke Walker has come to talk to us. Luke lives at Cleeve Prior and has many bee hives. He explained how the hives are formed, with the Queen Bee finding a suitable home and laying eggs, which hatch into worker bees .These bees begin building combs from secreted beeswax, which are used for storing honey and raising more bees.

He also told us that different plants give a different flavour to the honey. One of his favourites is the rape seed plant.

A very interesting and informative talk.

Our evening concluded with a raffle and refreshments. Our June meeting is titled "The Weather Road Show " , with speaker Ian Pickering, at the Village Hall on June 15th , 7.30pm. Anyone interested in joining us will be welcome, just come along on the night, or for more information you can check our Facebook page or Call 01386830517



Chairman's Annual Report 2025/2026 Honeybourne Parish Council

It has been another active and rewarding year for Honeybourne Parish Council, made possible by the continued support and involvement of our community. I am pleased to report on the range of projects, improvements and initiatives delivered this year on behalf of residents.

2025 marked the 80th anniversary of VE Day, commemorated with a memorable Silver Band concert and poetry readings by local schoolchildren — a fitting tribute bringing generations together. In July I was delighted to open the Village Fete, which volunteers organised beautifully. In November I attended the Remembrance Service at St Ecgwin's Church and represented Honeybourne in the Poppies to Paddington initiative run by Great Western Railway — a wonderful tradition the parish has now taken part in for three years. The Christmas Lights Switch-On on 28 November was again a highlight of the village calendar and very well attended.

The Council was delighted to recognise the exceptional service of Sarah Layton and Andy Clear of Royal Mail, who have each dedicated 25 years to delivering mail in Honeybourne — a combined 50 years of reliable service in all weathers. Congratulations also to Honeybourne's darts team, who won the Wychavon Parish Games in October! Speed concerns raised by residents on Weston Road led the Council to arrange a data collection exercise with Worcestershire CC Highways, resulting in the mobile speed enforcement van attending the area periodically. A Community Speed Watch team has also been trained and vetted and will be out monitoring speeds during the summer months. Commuter parking pressure on residential roads remains a priority. Wychavon District Council has been working with Network Rail to explore options for a new car park with safe pedestrian access. A bridge over the railway line is now being explored and Wychavon's Executive Board agreed in April 2026 to consider funding a feasibility study at their June meeting. The Council will continue to press this matter to ensure it is not lost during the Local Government Reorganisation transition.

A resident on Stephenson Way raised concerns about the station car park lighting remaining on throughout the night. Following a formal approach by the Parish Council, GWR confirmed that lighting levels are significantly reduced during night-time hours and in January 2026 installed shielding on 15 lighting columns across the car park, approach road and platforms. The Council will continue to monitor the position on behalf of residents.

The NDP Review continues to be one of the most significant pieces of work the Council undertakes on behalf of residents. The Government has introduced mandatory housing targets through the updated National Planning Policy Framework, with a national ambition to deliver 1.5 million new homes over this Parliament. This makes it more important than ever that Honeybourne has a robust and up-to-date Neighbourhood Plan. I wish to be absolutely clear — the plan is not a mechanism to block housing. However, a strong plan gives our community a real voice in ensuring that any future development takes place in the right locations, is of the right type, and genuinely meets the needs of Honeybourne, rather than leaving those decisions entirely to national planning policy. A community survey was carried out earlier this year and a good number of responses were received — thank you to every resident who took the time to complete it. Your responses will be central to shaping the policies in the revised plan.

My thanks also go to the members of the NDP Steering Group, who give their time voluntarily to oversee this complex and important work.

The Council submitted a formal objection to the Bretforton Road reserved matters application, raising concerns about bungalow provision, the omission of the community orchard committed to at outline stage, street tree provision and pedestrian connectivity. Residents should also be reassured that the Arrow Valley Solar Farm — a nationally significant infrastructure project — has no proposed solar sites within Honeybourne parish. The Council submitted a detailed response to the statutory consultation and has reserved the right to make further representations once a full application is submitted.

Phase 2 drainage works at the Sports Field were completed in April 2026, improving the facility during the winter months. A new footpath surface was installed improving access to The Leys. Grants were awarded during the year to Honeybourne Village Hall, Friends of St Ecgwin's Church, South Worcestershire Citizens Advice Bureau and Honeybourne Hawks U11s — who had an outstanding unbeaten season in the Ambassador League, remaining unbeaten in all competitions and reaching the semi-final of the league cup. Well done to everyone involved!

The Council submitted a formal response to the Government consultation on Local Government Reorganisation in March 2026, strongly supporting the Transforming Worcestershire two-council model, which we consider better reflects the geography and character of south Worcestershire. The Government's decision has not yet been announced. Parish councils will continue to exist under either model and the Council will keep residents informed as the position develops.

None of what the Council achieves would be possible without the dedication of my fellow councillors and the extraordinary contribution of the many volunteers and community groups who give their time and energy to making Honeybourne such a wonderful place to live. Whether organising events, maintaining our footpaths and open spaces, running community clubs and societies, or quietly supporting their neighbours — your efforts, seen and unseen, make an enormous difference. Thank you.

My thanks also go to County and District Cllr Hannah Robson and District Cllr Judith Ciotti for their support during the year. As we look forward to the year ahead, the Parish Council remains committed to enhancing our village and continuing to serve the whole community.

Cllr Heath Jobs Chairman, Honeybourne Parish Council

The full Chairman's Annual Report 2025/2026 and all other reports presented at the Annual Parish Meeting are available on the Honeybourne Parish Council website:

Members of Honeybourne Parish Council			
Heath Jobs (Chair) 07375085116			
Balbir Dubb (Vice-Chair) 07795670707			
Andrew Attridge	01386 830744	Amy Mathias	07956076271
Graham Clelland	01386 832500	Stephen Sidwell	07815311432
Colin Clear	07702105737	Sandra Walsh	07714237336
Judith Mellor	07770983522	-	
Clerk contact details: Mobile: 07951 429652 clerk@honeybourne-pc.gov.uk			

HONEYBOURNE VILLAGE HALL PRESENTS...

AN EVENING OF
COUNTRY/FOLK MUSIC
WITH...

THE YIPPEE YI YAYS

BRINGING LIFE TO COUNTRY CLASSICS
BY THE LIKES OF JOHNNY CASH,
KENNY ROGERS AND MORE, ALONG
WITH FOLK REELS & JIGS

Licensed bar on the night

SATURDAY 4TH JULY
DOORS 7PM

TICKETS £10

SCAN QR CODE OR VISIT

WWW.HONEYBOURNEVILLAGEHALL.ORG



AT: HONEYBOURNE VILLAGE HALL, EVESHAM



Honey Tots
Baby & Toddler
Group

Honey Tots Baby & Toddler Group



**THURSDAYS, 9.30-11.30AM
HONEYBOURNE VILLAGE HALL**

Stay, play & weigh!

**Bring your little one and their red
book and get baby weighed.**

Thursday 11th June





Dry-Carpet

Dry Carpet & Low Moisture Upholstery Cleaning



dry-carpet.co.uk



We now offer jet washing for your patios, drives and decks

- ✓ No drying time for carpets-can be used immediately after cleaning
- ✓ Suitable for all natural and synthetic carpets
- ✓ No risk to children, pets or those with allergies
- ✓ Low moisture upholstery cleaning to refresh your furniture
- ✓ Ideal for pet stains with built in deodoriser
- ✓ No risk of sticky residue



Ideal for carpets with underfloor heating or floor power outlets

01386 662306 info@dry-carpet.co.uk

Wills, Trusts, Lasting Powers of Attorney and more!



Over 10 years experience. Full member of the highly regarded and globally recognised Society of Trust and Estate Practitioners (STEP).

Fixed fees & fully insured

Call **Michelle** on **07516298125** or email **michelleestateplanner@outlook.com**

Open Gardens in the coming months.

National Garden Scheme - ngs.org.uk
 Pershore: 6th and 7th June
 Shipston on Stour: 7th June
 Cotswold Garden Flowers: 10th June & 8th July
 Stanton: 14th June
 Conderton: 20th June
 Rockcliffe Lower Slaughter: 10th June & 8th July

UK National Directory - opengardens.co.uk
 Astwood Bank: 13th and 14th June
 Ashton under Hill: 13th and 14th June
 Defford: 13th and 14th June
 Hook Norton: 13th and 14th June
 Church Lench: 27th and 28th June
 Harbury: 27th and 28th June
 Fladbury Walkabout: 4th and 5th July

See websites for more info

June Gardening Tips

June is one of the busiest and most rewarding months in the garden. Longer days and warmer temperatures encourage rapid growth, but regular maintenance is essential to keep everything looking its best.

Flowers & Borders

Deadhead roses, bedding plants and perennials regularly to encourage more blooms.

Tie in climbing plants such as sweet peas and clematis before stems become damaged by wind.

Water hanging baskets and containers daily during hot weather. Feed flowering plants weekly with a liquid fertiliser for stronger displays.

Cut back spring-flowering plants such as aubrieta and alyssum after flowering to keep them tidy.

Vegetable Garden

Continue sowing salad crops little and often for a steady harvest.

Plant out tomatoes, courgettes, pumpkins and runner beans if not already done.

Earth up potatoes as the foliage grows to protect developing tubers.

Thin carrots, beetroot and parsnips to give roots space to develop.

Watch out for slugs and snails, especially after rain.

Fruit Garden

Net soft fruit bushes to protect ripening fruit from birds.

Water strawberries regularly and remove runners unless new plants are wanted.

Summer prune trained apple and pear trees where necessary.

Check gooseberries and currants for signs of pests or mildew.

Lawn Care

Mow lawns regularly, but raise the cutting height during dry spells to avoid scorching.

Apply lawn feed if required and water newly seeded areas.

Trim lawn edges to keep paths and borders neat.

Wildlife & General Jobs

Keep bird baths topped up with fresh water during warm weather.

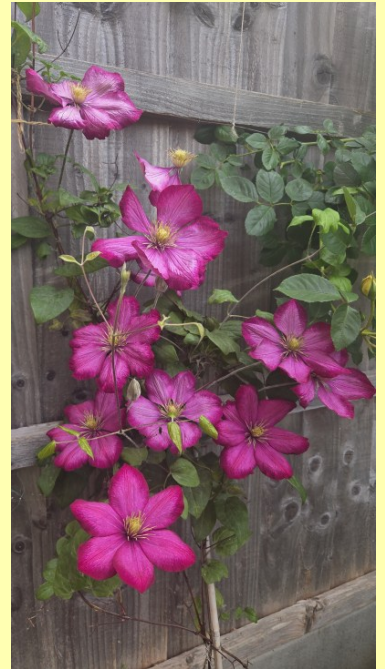
Leave a small area of the garden wild for pollinators and beneficial insects.

Weed little and often — weeds grow quickly in June warmth.

Mulch borders to help conserve moisture and reduce weeds.

Seasonal Tip

Early morning or evening is the best time to water plants, allowing moisture to soak into the soil before the heat of the day causes evaporation.



Make every day **WILD**

Season Passes for 2026 are now on sale



Buy yours now



Reformer + Mat + Live + Online

Do you want to try Pilates?

STUDIO 113

Pilates will improve your posture, make those niggling aches and pains go away whilst strengthening your core and improving flexibility and mobility

Group Pilates classes are held at Honeybourne Village Hall on Mondays at 9am, Tuesdays at 6pm, Wednesdays at 8.45am & Thursdays 6.30pm.

PLUS!! We now we have a men's class on Wednesdays at 7 pm

1 on 1 reformer and Group Reformer+ classes are held in our well equipped studios in Mickleton

Scan To See our Reformer+ Studio

nicky@studio113.uk - 01386 662306 -
07570 023535 - www.studio113.uk





THATCHED TAVERN

· Honeybourne ·

www.thatchedtaVERN.co.uk

JUNE 2026



The Welcome Table

A Community Coffee Morning

Monday 15th June

10am-12pm

Part of Loneliness awareness week, we are creating a space for the village to come together



Father's Day

Sunday 21st June

Have a pint on us!

Enjoy a main meal with us & dad gets a pint on us.



Fish & Chip Tuesdays

Every Tueaday

Two portions of our fish & chips
for £25.00!



Blue Light Discount

Monday- Friday

15% off food
£10.00 Pizza



Quiz Night

Sunday 28th June
7:30pm



Open Mic

Wednesday
10th June
7pm

Live Music

Friday 19th June
7:30pm



BOOKINGS@THATCHEDTAVERN.CO.UK

01386 834273

FOLLOW ON OUR SOCIALS TO KEEP UP TO DATE WITH OUR LIVE ENTERTAINMENT & SEE OUR MOUTH WATERING FOOD!



A J HICKMAN ELECTRICAL

E: ajhickmanelectrical@aol.com

As a business our aim is to provide a **high quality** service so our customers receive **top quality** install and satisfaction on the whole service at a very **competitive price**.

- New Build Installs
- Rewires
- Fuseboard Upgrades
- Additional Power Points / Lights
- External Lighting
- Any Aspects of Electrical Work
- Additional BT Points
- Additional TV Points

Electrical Safety Register

incorporating
ELECSA + ECA
Certification Ltd



TEL: 01386 831258

MOB: 07976 052828

GLM Property Maintenance

- Traditional Window Cleaning
- Dry Stone Walling
- Fascias & Gutters (Repairs & Renewal)
- Driveways & Patios (Installation & Cleaning)
- Roof & Solar Panel Cleaning
- Power Chimney Sweeping
- Cowl/Pot Fitting and Repointing
- Roofing & Flat Roofing
- Fencing & Landscape Gardening
- Rendering
- Hedge & Tree Cutting
- Rubbish Removals
- Painting Interior/Exterior
- Garden / House Clearances
- And much much more

No job is too big or too small!

Call for a free quote today!

07399 024702

GLMServices18@gmail.com

Fully Insured

Registered Waste Carrier

We're on Yell.com 

Like us on Facebook  @GLMServices18



Blocked Ears?

EAR WAX can be troublesome, causing sudden hearing loss, discomfort and itchiness - but it can be easily removed at the Cotswolds' friendliest treatment clinic located near Blockley.

The Willows

NORTH COTSWOLDS EAR HYGIENE CENTRE

Unit 47, Northwick Business Centre
Blockley, Moreton-in-Marsh, GL56 9RF

Book Online: www.earhygienist.co.uk

Phone: 01386 701650

Issy@earhygienist.co.uk

Evergreen Garden Maintenance

Mowing, Hedge Cutting
Tree Pruning, Turfing etc.

No job to small.
References available.

Garden Clearance Service.

FOR A FREE QUOTE

Please phone Tony

T: 01386 854797

M: 07752

613814



CAMPDEN
HOME NURSING

1990 **35** 2025
YEARS

of hospice care at home

DID YOU KNOW LOCAL CHARITY CAMPDEN HOME NURSING PROVIDES HONEYBOURNE RESIDENTS...?

WEEKLY
LOTTERY



A Little Play, a Lot of Care

- **End-of-life nursing care** and support in people's own homes by dedicated nurses
- **Bereavement counselling** and support for adults and teenagers
- **Play therapy** for children aged 4 - 13
- **Wellbeing activities** and community workshops
- **Volunteering opportunities** at our charity shop, gardening or support at Jecca's House



Join our weekly lottery for just £1 per week to win £250,000 and support us!

01386 840505 info@campdenhomenursing.org

www.campdenhomenursing.org Charity 1178423



*Join us for a lovely
afternoon tea at*

*Honeybourne
Village Hall*



20/06
Saturday

Cost £1.00
To secure your place, please book
via our website
www.honeybournevillagehall.org

03:00
P.M.

Honeybourne aged 60+ residents only
(limited places)

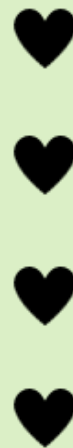
FUTURE EVENTS

****Movie Night – Hamnet**
****Country Music night – 4th July - tickets can be purchased online****
****Brush & Tipple evening 22nd June - tickets can be purchased online****
****Gin Tasting Event – Date to be confirmed ☺****

Monday	Tuesday	Wednesday	Thursday	Friday	Saturday	Sunday
Pilates with Nicky 9am – 10 am ~ Fitness with Jae 10:30am – 11:30am	Yoga with Jae 10am – 11 am	Pilates with Nicky 8:45am – 9:45am ~ Art Group 10am – 12:30pm	Coffee morning 9:30am-12:00pm ~ Embroidery Club 9:30 – 13:30 4 th June ~ Toddler Group 9:30am – 11:30am	Gentle Yoga 9:45am – 10:45	Zumba with Lesley 9.30am-10.30am	
		Wed Club 2:00pm – 4:00pm 3 rd June	Senior Stretch Class 1pm- 3pm			
Kids Theatre Group 3:45pm – 5:45pm				Healthy Worcestershire 2:00pm – 4:00pm		
WI – 15 th June 7:00pm- 10:00pm 22 nd June Brush & Tipple (painting class) 7pm - onwards	Pilates with Nicky 6:00pm- 7:00pm	Men's Pilates with Nicky 7.00pm - 8.00pm	Pilates with Nicky 6:30pm – 7:30pm ~ Life Drawing 18 th June 7:45pm – 10:00pm	Short Mat Bowls Group 7.30pm-9.30pm		

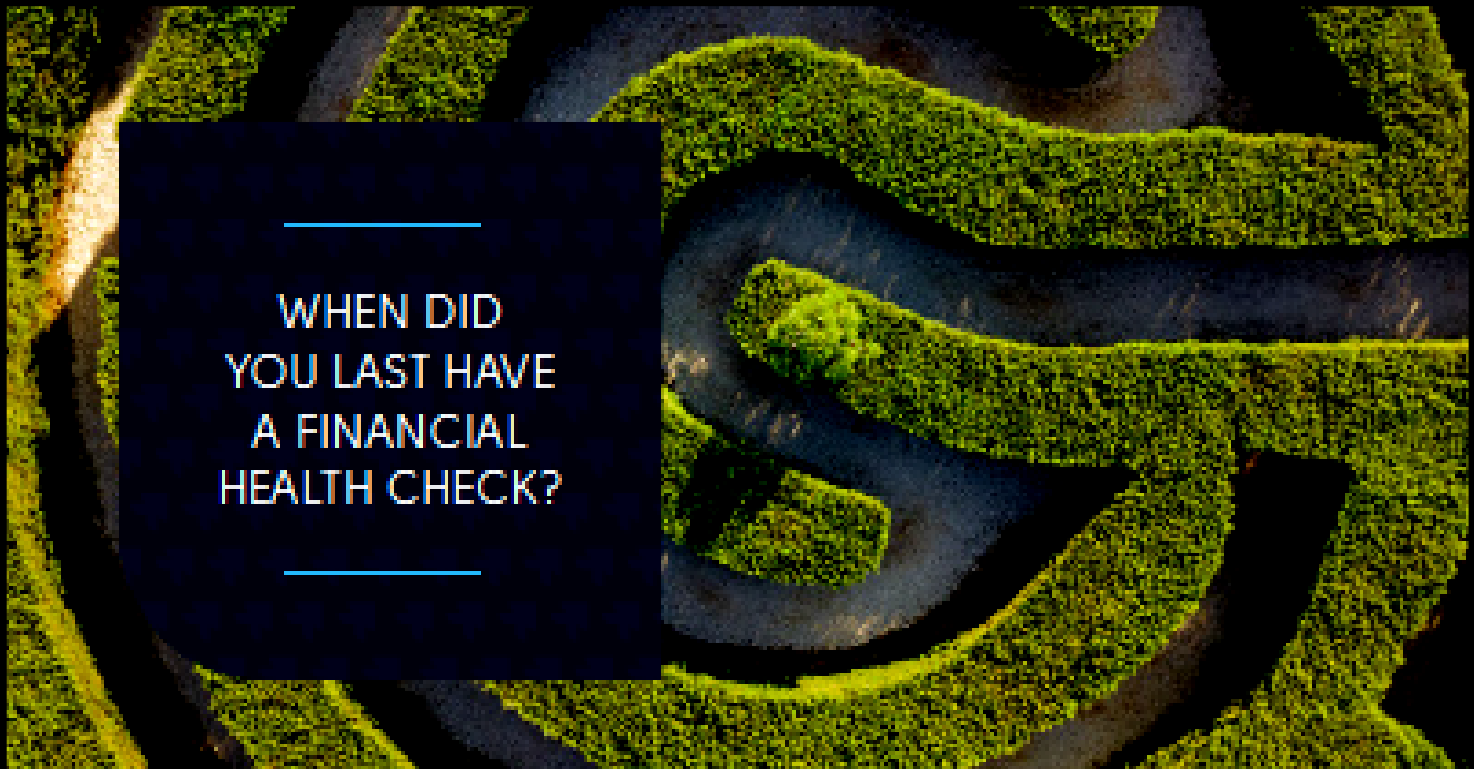
All classes require booking to attend.

Pet Portraits by Ella



Beautiful pencil drawings to capture your beloved fur baby. Whether its for a gift or for yourself, it's a wonderful way to cherish a pet forever. Perhaps it's a memory of a long-lost friend, a loyal companion or a recent new addition to your family. What ever the occasion let us help you to remember them always. For more information:

Email: carolegraves@btinternet.com Tel: 07733 045103



WHEN DID
YOU LAST HAVE
A FINANCIAL
HEALTH CHECK?

Would you know if:

- You could have a capital gains tax liability?
- You could access your pensions flexibly?
- Your pension fund is under performing?
- Your investments are providing the best return?
- You have an inheritance tax liability?
- You have sufficient cover in place to protect loved ones?

With a financial health check you could get the answers you need.

For a **FREE**, no obligation financial review, please contact me to arrange a suitable time for us to meet.

I'm happy to have initial discussions on the phone, via video call or face to face.

Karl Thorpe BA(Hons), DipPFS
Independent Financial Adviser

m. 07879 466385

e. karl.thorpe@afhgroup.com

www.afhwm.co.uk

AFH Wealth Management is a trading style of AFH Independent Financial Services Limited, which is authorised and regulated by the Financial Conduct Authority, www.fca.org.uk/register. Financial Services Register no. 216704. Registered in England and Wales. Company no. 04049180. Registered Office: AFH House, Buntford Drive, Stoke Heath, Bromsgrove, Worcestershire, B60 4JE. AFH Independent Financial Services Limited is a wholly-owned subsidiary of AFH Financial Group Plc (company no: 07438837). A508 4-06/22-01

AFH  wealth
management

X is the shape of the Saltire Cross

There are many different shapes of crosses, and the saltire cross is just one of them. Everyone is probably very familiar with the saltire cross of St. Andrew with its background of dark blue on the Scottish flag, especially when England play Scotland at football or rugby. Tradition holds that St. Andrew, the brother of St. Peter, was crucified on a cross made in the shape of an X.

We think of the traditional shape of the cross as being a straight vertical, crossed with a horizontal, about two-thirds of the way up the vertical. If you look around Honeybourne church, you can see several such crosses, including behind the altar and on the cover of the font.

But there are many other types of cross. The Maltese cross consists of four arrow shapes, whose points come together in centre of the cross. The Tau cross, linked to St. Anthony, is a simple 'T' shape.

An Iona or celtic cross has our traditional cross shape, but with a central circle surrounding the intersection of the four arms of the cross. A cross of glory is also a traditional cross shape, but with rays emanating out from the intersection of the arms. And tradition holds that St. Peter was crucified on a cross turned upside down: legend has it that he asked for this so that he could look heavenward as he was dying.

By Lesley O`Connell Edwards

New Brass Players Wanted!

Bret Prep Training Band is seeking new members to join their friendly Sunday morning rehearsals (10.30am–11.15am). We are especially looking for cornet players, but all brass players (approx. Grade 3+) are welcome. Instruments can be provided for free.

We are also recruiting for **Bret Set Go**, our group for absolute beginners, which meets at 10am. Come and join a sociable local hobby and perform at great local events like the Pershore Midsummer Brass and the Bretforton Village Proms!

Interested? Please contact Laura for more information: laurahunt24@hotmail.co.uk.

Annual Plant Sale—St Egwin`s Church

We look forward to seeing you at this year's popular Village Plant Sale!

We would be very grateful if you could kindly plant a few extra seeds now, and bring the resulting plants along for us to sell on the day. We have also received a donation of some lovely ceramic plant pots, which will be sale on the day.

All proceeds go towards the Friends Charity for upkeep of the church building. Date: Sat 6th June Time : **2pm-4pm**



**Plant
Sale**

New time—2pm

Ribbons for Remembrance

This year we are planning to do Ribbons for Remembrance at the church.

Please find/save any ribbon you may have and watch this space for further information


Thank you.

Church Services - June 2026

	Church Services - June 2026			
	Pebworth	Dorsington	Honeybourne	Willersey
7th June Trinity 1			9.00 am Holy Communion (Traditional language)	10.00 am Morning Prayer (Modern language)
14th June Trinity 2	11.00 am Holy Communion (Modern language)		11.00 am Family Morning Praise	9.00 am Holy Communion (Traditional language)
				4.00 pm Prayer & Praise
21st June Trinity 3			11.00 am Holy Communion (Modern language)	11.00 am All Age Service
28th June Trinity 4/ Peter the Apostle	11.00 am Family Service			11.00 am Holy Communion for St Peter (Traditional language)
5th July Trinity 5			9.00 am Holy Communion (Traditional language)	10.00 am Morning Prayer (Modern language) & Baptism

Sidesmen, readers and intercessors at Honeybourne:

	7 th June	14 th June	21 st June	5 th July
Sidesman	Sylvia Matthews	Anne Magee	Anne Jones	Sylvia Matthews
Reader	Elizabeth Rose	Lesley O'Connell Edwards	Lawrence Schroeder	Teresa Banks
Intercessor	Minister	Minister	Minister	Minister



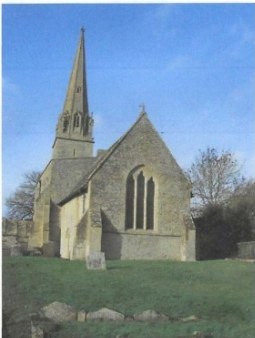
GOD'S ACRE: FULL OF WILDLIFE!

**COME AND EXPLORE
HONEYBOURNE'S CHURCHYARD.**

**STAND STILL AND SEE WHAT
YOU CAN SPOT AND HEAR!**

**COME TO OUR SERVICE ON
JUNE 14TH 2026 AT 11AM**

EVERYONE WELCOME.



Vicar's Letter June 2026 – 'No such thing as Ordinary'

The church's year follows a familiar pattern of seasons and festivals that help guide us through the story of our faith. As the months unfold, we remember Christ's death and resurrection, celebrate the gift of the Holy Spirit, and give thanks for those who have shared the faith.

Following the feasts of Pentecost and Trinity Sunday, we have now entered a season known as Ordinary Time, which lasts right through until Advent.

This can sound, at first hearing a bit boring, like the Church settling back into routine after the great festivals have passed. I always though look forward to this season in which faith is woven quietly and steadily into the fabric of daily life.

The term 'Ordinary' doesn't actually mean normal or commonplace; it comes from the word ordinal (meaning 'counted') because the weeks are numbered in sequential order. It is a repeating pattern that itself carries a spiritual lesson, that much of discipleship is formed not in moments of spiritual intensity, but in persistence of prayer, kindness and forgiveness even when inspiration feels absent.

It reminds us that God is not only present in dramatic moments, but also in faithful continuity. A truth reflected beautifully by the liturgical colour of green – green being the colour of growth, of fields after rain, and of leaves slowly unfolding. We find that spiritual maturity often develops in this same hidden way, and that God frequently works through slower processes. A tree does not strain to grow; it simply remains rooted, and the same is often true for our spiritual growth.

The Gospel readings during this season often focus on the ministry and teachings of Christ as he encounters ordinary people whose lives are transformed by grace. These passages invite us to notice holiness within everyday life and, in a culture shaped by urgency and distraction, they provide a quieter rhythm which teaches patience with ourselves and with one another. We live in an age that prizes achievement, visibility, and immediate results, yet the kingdom of God is often compared to small things: yeast in dough, a mustard seed, or treasure hidden in a field. The life of faith cannot always be measured by productivity; sometimes faithfulness simply means continuing to love, pray, and hope through seasons when little seems to change.

But our mission as disciples is to be sent out into the world to tell of our resurrection hope, and for this to shape our treatment of others. And to recognise – as we participate in the quiet work of the kingdom - that no time is truly Ordinary when offered to God. Have a great summer!

Revd Jon Barwood

Tel: 07777 148880 Email: jonbarwood@btinternet.com



Honeybourne Bereavement Café

An opportunity to meet others in a similar situation offering mutual support and friendship within a safe place.

When: 1st Saturday of each month

Time: 9.30am-11.30am

**Where: The Gate Inn
Honeybourne, WR11 7QJ**

Free of charge, inc. refreshments



We are also offering a 7-week Bereavement Journey Course, dates to be confirmed.

 eveshamreferrals@svp.org.uk

 0777 6827112

Kindly supported by Worcestershire CC and Wychavon Council



St Vincent
de Paul Society
England and Wales
Turning Concern into Action



Wellbeing
in WYCHAVON

St Vincent de Paul Society (England & Wales): registered charity number 1053992
A company limited by guarantee in England and Wales 3174679



96 Stratford Road

96 Self Storage



Honeybourne

Secure. Flexible.
Right on your
doorstep.

New Location Now Open

- ✓ Flexible Terms
- ✓ Safe and Secure
- ✓ Transparent Pricing
- ✓ Residential/Trade Storage

contact@96storage.co.uk

[96storage.co.uk](https://www.96storage.co.uk)



Peter

Worcester & Wychavon

bluebird
care[®]

Helping your
dad live his
life. So you
can *live yours*.

We're here so your loved one can stay home, where they want to be. Where things are safe and familiar and they have the best chance to live a full and meaningful life.

Whether it's everyday companionship or everyday errands, Live-in Care or Home Care visits, our highly-trained Care Experts will give your loved one the support they need to live in the place they feel best: home.

See how we can *support you*.

It's good to
be home

Call us for a friendly chat on

01386 575800

Or email

worcesterandwychavon@
bluebirdcare
.co.uk

*Find
out more*



Martin Grinnell FUNERAL SERVICES

Evesham's only independent
funeral directors



Over 30 years
serving the local
community



- Professional Personal Service
- 24 Hour / 7 Days a Week
- Home Visits
- Private Chapel of Rest

Please contact us at any time
01386 422233

1 Bewdley Street, Evesham. WR11 4AD

HONEYBOURNE HERITAGE RAIL TALES & TRAILS – LAUNCH EVENT

Join us at Honeybourne Station for the launch of our new heritage project celebrating the rich railway history of the village

Explore new heritage displays, discover the circular village trail, and help celebrate Honeybourne's railway story

Everyone welcome

DAY

SATURDAY

DATE

6 JUNE

TIME

11AM



Hosted by the Friends of Honeybourne Station with support from GWR Community Rail



**REPAIRS - NEW ROOFS -
LEADWORKS - GUTTERING -
DOWNPIPES - CHIMNEY WORKS -
UPVC FASCIA & SOFFIT
REPLACEMENTS - VELUX WINDOW
INSTALLATIONS**

**CONTACT MARK FOR YOUR FREE
ADVICE AND ESTIMATE**

**HONEYBOURNE
ROOFING**

HONEYBOURNEROOFING.COM

**07597380773
HONEYBOURNEROOFING@GMAIL.COM**

As Time Goes By Memorials

Memorials that reflect a lifetime



NEW HEADSTONES & CREMATION STONES

A wide choice of styles and finishes



RENOVATIONS

Restoring memorials with care and expertise



ADDITIONAL INSCRIPTIONS

Adding names, dates and personal tributes



HOME VISITS

We come to you with no obligation and expert advice



01527 550 505



www.astimegoesbymemorials.org.uk

astimegoesbymemorials@hotmail.com

FOLLOW US



Contact Us:

07531 046597
bespoke@aj-furniture.co.uk

aj-furniture.co.uk



HANDMADE & BESPOKE
FITTED INTERIORS
KITCHENS
FREESTANDING FURNITURE

Covering Worcestershire,
Warwickshire & The Cotswolds

Merstow Green Funeral Home



Kevin Bowen

Philip Tomlins

Martyn Jeynes

Proudly serving the Vale of Evesham and North Cotswolds since 2008

Merstow Green Funeral Home are here to support and guide you. We offer a friendly and professional service to families

Evesham

01386 49903

20 Merstow Green
WR11 4BD

- 24 - hour service
- Bereavement advice
- Home visits
- Private chapels of rest
- Floral Tributes
- Memorial Masonry
- Prepaid funeral plans

**Call us for immediate support, advice or to
arrange a home visit or to find out more about
our prepaid funeral plans.
We are here to help 24 hours a day.**



www.merstowgreen.co.uk





Support with personal care
and medications

Domestic help and companionship

Contact Telephone: 01386765102

info@medistaff24.co.uk

www.medistaff24.co.uk



**CONSTRUCTION &
GROUNDWORKS**

 07497 950 391

 hello@bascontracting.co.uk

 [Bilbrough_and_sons_ltd](https://www.instagram.com/Bilbrough_and_sons_ltd)

 BAS Construction

MWS Aerial & Satellite
Tel: 01386 833342

- Freeview
- Freesat
- Radio and DAB
- Additional TV Points
- Additional Telephone Points

Free advice and quotations

CAI Member C. 1559

Member of the Worcester Trader Register

www.mws-aerial-satellite.co.uk

email: info@mws-aerial-satellite.co.uk

Bella Hair

---- Unisex Salon ----

34A High Street, Honeybourne,
WR11 7PQ

Janette and Charlotte look
forward to meeting you!

Appointments - 01386 833470



June at the Fleece Inn

Tue 2 June, 7pm – Sip & Paint Brush Party, £33

Sun 7 June, 8pm – Fleecey Folk: Queer Folk, £17

Tue 9 June, 2pm – John McCusker Fiddle Workshop, £25

Tue 9 June, 8pm – Fleecey Folk: John McCusker Trio, £20

Thu 11 June, 2-3pm - Tai Chi Class, £10

Wed 17 June, 8pm - Fleecey Folk: Gness, £18

Thu 18 June, 2-3pm - Tai Chi Class, £10

Sat 20 June - National Morris Weekend Dancing at the Fleece

Sun 21 June - Father's Day

Wed 24 June, 8pm – Scotland Introducing: Heisk & Chloe Mathuru, £20

Thu 25 June, 2-3pm - Tai Chi Class, £10

Thu 25 June, pm – Happenstance Morris

Thu 2 July, 2-3pm - Tai Chi Class, £10

Wed 8 July, 7.30pm - Evesham Festival of Words: Death of a Clown, £15

Open all day. Food served Mon-Sat 12-2.30 & 6-9pm, Sun 12-8pm

Folk Session every Thursday, all welcome.

Celtic Folk Session 3rd Wednesday, Sunday Folk on 2nd Sunday.

The Fleece Inn, The Cross, Bretforton, Worcestershire, WR11 7JE

01386 831173 info@thefleeceinn.co.uk www.thefleeceinn.co.uk

CPB PLASTERING

All aspects of plastering work:

Boarding, skimming,
rendering, screeding

Call **CARL BENFIELD**

Tel : 01386 831673

or 07717 201 950

Email: c-benfield@sky.com

SECURE & CONVENIENT STORAGE IN THE HEART OF THE COTSWOLDS

 **CONTAINERS DESIGNED FOR STORAGE**

 **8X MORE AIRFLOW**

 **EASY OPEN DOORS**

 **24/7 ACCESS + CCTV**

 **ASK ABOUT LONG TERM DISCOUNTS**



Your Trusted Partner for Secure, Flexible & Local Storage Solutions

www.cotswoldcontainerstorage.com
sales@cotswoldcontainerstorage.com
01789 330668

Concrete Works · Bretforton Road
Weston Subedge WR11 7QL



fairview

Your Local Builders Merchant

- Building Supplies
- Landscaping Supplies
- Sleepers
- Fencing
- Large range of aggregates
- Large Stock of paving & Walling
- TopSoil, Soil Improver
- Mushroom Compost & Bark
- Electrical & Plumbing Supplies
- Timber
- Decorating Supplies
- and much, much more

 **01386 833001**

BUCKLE STREET, HONEYBOURNE, EVESHAM, WORCES. WR11 8QE
WWW.FAIRVIEWTRADING.CO.UK | WWW.FAIRVIEWLANDSCAPINGSUPPLIES.CO.UK

Honeybourne Walk

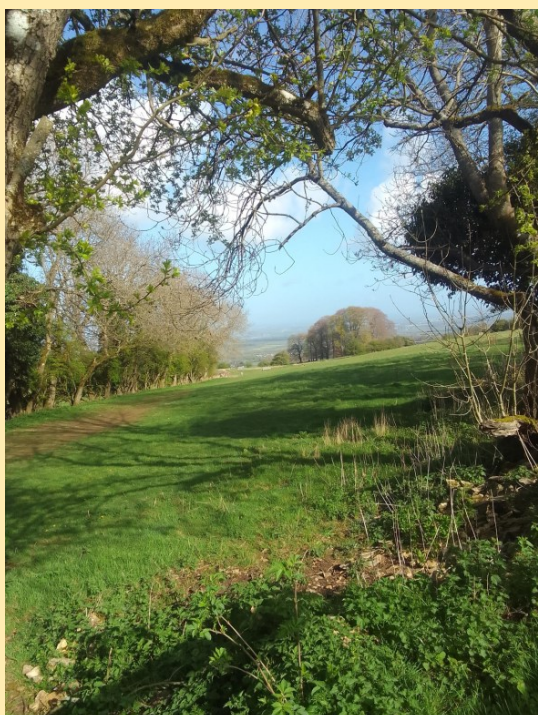
Public Right of Way No. 549C A circular walk, mostly pet-friendly. Distance: 2 miles flat terrain with 3 pet-friendly stiles and 8 stiles. Pets should be kept on leads at all times. Sturdy shoes or boots are recommended.

Start at The Thatched Tavern (or join this circular route to suit yourself). Take the footpath alongside the Thatched Tavern into China Corner and between the two houses directly in front of you. At the top of the alley carry straight on through the estate until you reach the Weston Road. Take GREAT CARE when crossing this road. This is a very fast road, and visibility is not very good. Over/through your first pet-friendly stile. This path leads through a very pleasant woodland area before reaching the next pet-friendly stile. Once over the stile, turn right and follow the edge of the field (headland) to a waymarker post where you will turn left, again, continuing to follow the headland.



Across another pet-friendly stile, then continue straight on to the wooden bridge. Cross the bridge and continue along the headland in the same direction until you meet the next wooden bridge with a stile. This stile is not pet-friendly and is the first of three that will require you to lift your pet over – or to retrace your steps.

Bear right following the waymarkers and cross two stiles before heading to the gate leading onto the bridge. Over the bridge, immediately turn right and through the next gate. Immediately turn left down a narrow path which runs alongside the disused railway. Continue along this path to just before the road bridge, where you will turn left and up onto the Mickleton Road. At the road, again taking GREAT CARE, turn left and walk 150 yards to the next stile on your left. If you cannot face another five stiles, or are walking your pet, you can carry on along Mickleton Road until you meet Stratford Road, and then turn left towards the village centre.



To continue the route, cross the stile to enter the field, following the waymarkers directing you through four more stiles and into the churchyard. Take the path opposite the church porch, and through the kissing gate. This leads you over a gated bridge and on to the Weston Road. Cross the road and bear left to find the pathway leading to High Street. Turn left on the High Street and back to the Thatch.

Hidden – Don't Seek!

By Honey Wildbourne

The surrounding areas of our village, at this time of year, see a burgeoning of new life. Of the two species of deer I see regularly around Honeybourne, the roe deer (*Capreolus capreolus*), with its distinctive white rump patch, will be birthing their young during May and June - most often, a pair of twins. The story of their gestation is remarkable in the fact that, of all hoofed animals in the UK, the roe deer is the only one that benefits from delayed implantation.

The mating season for these deer is in mid-summer, when the females are in good health because of the availability of a large quantity of food. The gestation period is around 10 months, considerably longer than that of other deer

species, because the ball of cells – known as a blastocyst – that will later develop into an embryo, remains unattached in the uterus for around 5 months. In late December or early January, the blastocyst attaches and, another 5 months later the young deer – called a kid, in the case of roe deer – is born.

During the first few weeks of life, it's difficult to spot them. I have seen, during the last few days, a couple of female roe deer hovering about in areas of long grass, surveying the area with keen eyes, suggesting her kids are nearby. Roe deer kids, like many very young deer, instinctively hunker down in long grass or bracken in order to stay safe from predators. At birth their coats are dappled light and dark, acting as a natural camouflage. The white spots on the kid's reddish-brown coat mimic the dappled light filtering through tall grasses or under a woodland edge canopy.

Although we no longer have lynx and wolves in the UK - that would have seen young deer as their natural prey - according to the British Deer Society, kids and fawns, all too often, still fall prey to over-enthusiastic domestic dogs at this critical time of year. As tempted as I am to try and see a young deer, the stress caused to the mother deer – who is likely to run away in fear - is too great to go blundering in.

Most urban children of my generation were first introduced to deer with the film *Bambi*, which was adapted from the book of the same name by Felix Salten. This book was based on the life of a roe deer. Unsurprising, since they are very delicate and beautiful creatures with large, dark, expressive eyes, making them very appealing to children and adults alike.





Part of the Tesco Group



40 Stratford Road, Honeybourne, WR11 7PP

Tel: +44 7721277323

➤ One Stop Hours	Monday -Saturday	7 am - 10 pm
	Sunday	8 am - 8 pm
➤ Post Office Hours	Monday -Friday	7am - 5 pm
	Saturday	8 am- 1 pm
	Sunday	Closed

- Deposit Cash & Cheques directly to your bank: Free cash withdrawals: Get your money to travel card for your holidays: Pick up your foreign currencies, and many more services.
- Amazon Hub -Pick up your Amazon deliveries from here & drop off your returns.
- DPD Collection & Delivery.
- Great deals on Beers, Wines and Liquor: Birra Moretti 10 pack £13 : Budweiser 10 pack £12 : Budweiser 20 pack £17.50 : Bud light 10 pack £8 : Corona 12 pack £15 : Carlsberg Pilsner 18 pack £13 : San Miguel 10 pack :£13 : Madri Excepcional 10 pack £15 : Thatchers Gold 10 pack £10 : Cruzcampo 10 pack£14 : Stella Artois 18 pack £18 : Carlling 18 pack £17.50 : Coors 18 pack £17 : Inches Chider 10 pack £12 : Strongbow Original Cider 10 pack £10.75 : Any 3 x 660ml Beers £6.50 : Any 3 x pre-mixed £6.50: Cider 3 x £6.50
- Coffee Machine : All drinks £2.49: Slushy's: £1.99
- Local products include Cotteswold Milk : Norths Bakery Bread, Knights Provisions Bacon
- Bennett's Ice Cream : Flavour & Fire Sauces & Seasoning.
- Meal Deal for £4, Sandwich, Baguette or Pie + Drink + Snack.
- Safe, colourful, and fun-perfect for your little explorer!



SUPPORT YOUR LOCAL



Cotswold Pet Cremation

At Cotswold Pet Cremation we promise a personal and individual pet cremation service.

We treat every single animal as though they are a member of our own family; with care, respect and compassion.

Our approach is professional and personal in equal measures and we promise only individual cremations, thus ensuring the ashes safely returned are solely those of your pet.

We offer a trustworthy and safe pair of hands and we welcome you to bring your special pet to us directly when the sad time comes; this way, you can be reassured that you know exactly where your beloved pet is being looked after, and, also know the journey that brings them here; something we would want to know ourselves.

We understand how important it is for you to trust us with your pet, your memories and your friend.

Located just 5 minutes from Honeybourne, we are ideally placed to serve the local community.

Mobile: 07946 052 941 Landline: 01386 247 395

Lower Fields House, Weston Road, Brefforton, Worcestershire, WR11 7QA

www.cotswoldpetcremation.co.uk





Your local friendly garage

**For Servicing and Repairs to all Vehicle Makes
Cars to Light Commercial Vehicles**

**Batteries • Tyres • Exhausts
Wheel Balance • Wheel Alignment
Diagnostics • Puncture Repairs
And Much More!**

**Give us a call or drop in and see us.
We are here to help you safely on your journey.**

T: 01386 832157

The Old Brickworks
Buckle Street
Honeybourne
Evesham WR11 8QE



Opening hours

Mon to Fri: 8am - 6pm

Sat: 8am - 1pm