

Honeybourne Village News



Info : Local : News

July 2026



Don't forget the Village Fete, Saturday 18th July.

Harmony Nails & Beauty

ENJOY A WIDE RANGE OF NAIL & BEAUTY TREATMENTS IN A RELAXING ENVIRONMENT



Call Helen on

0781 506 3541

15 Weston Road, Bretforton
WR11 7HW

www.harmonynailsandbeauty.com



Millinery Matters

Handcrafted individual hats & headwear

- Special occasion hats
- Cocktail hats & fascinators
- Unique bridal headwear
- Hat re-trimming service
- Hat stretching & repairs

For all your hatting needs contact
Annie

07810 204719

annie@millinerymatters.co.uk

www.millinerymatters.com
South Littleton

PICTURE FRAMING SERVICES



PHIL RAINEY

TEL: 01386 833505

MOB: 07969 620555

E-mail: phil@fill-the-frame.co.uk

45 School Street

Honeybourne

WR11 7PL

Facebook @ FILL the FRAME

Welcome to July 2026

Let's kick off this month's issue with some GOOD NEWS STORIES that may not have hit the major headlines but still deserve our attention!

For nature enthusiasts:

UK – new funding for restoration has kickstarted plans to reintroduce the golden eagle to England's countryside after a 150-year absence.

International – volunteers recently mapped over 100m of new coral growth on the Great Barrier Reef, displaying the health and resilience of the reef, thanks to conservation projects.

For eco warriors:

UK – London's underground tube is set to be increasingly powered by solar energy, with the goal of running on 100% renewable energy by 2030. INTERNATIONAL – despite President Trump's stance, solar power generation in the United States officially surpassed coal generation for the first time. State governments continue to resist the federal position and improve renewable energy production, regardless of Trump's anti-eco reputation.

For sports fans:

UK – darts fans will have seen Littler and Humpries lift the World Cup trophy last month, in a fantastic 10-5 victory over the Netherlands (Van Gerwen and Van Veen). England extended their record as 6-time winners of the event.

INTERNATIONAL – the Youth Olympic Games will take place in Dakar, Senegal, from 31 October to 13 November 13 this year, and Team GB have announced selection of 17 athletes from 7 different sports. Don't forget to tune in and support our next generation of athletes!

From all of us at HVN, have a lovely July!

Contact details for the HBVN:

Comments & contributions e.g. photo's around the village or area, jokes or puzzles , ideas for the Spotlight On... feature, articles, letters to the editor. editor.hbvn@gmail.com

ALL ARTICLES OR ARTWORK MUST BE PROVIDED READY FOR INCLUSION AND PRINT USE

A5 WORD, JPEG, PNG OR PREFERABLY POST INFO DIRECTLY INTO EMAIL

Deadline date for inclusions in 2026 is the 17:00hrs on 17th of the month

Monies raised for Pebworth Fire Fighters Charity

As many people know Roger Clarke collapsed at The Gate Inn last July with a cardiac arrest. Luckily for Roger Pebworth Fire Fighters were on their way back from an aborted call and saw him collapse. They stopped and immediately gave CPR and used the defibrillator. After 4 attempts with the defibrillator, they brought Roger back to life. Last October his family and friends attended a fund-raising event at The Gate and raised over £2500 for the fire fighter charity.

On Tuesday evening 26th May Roger, his family and Sue from The Gate met with the life-saving fire crew and presented them with a cheque for over £3000. Including extra raised money from a previous event held at The Gate for the same charity.

We as a family will be forever grateful to these wonderful men that saved Roger's life and are forever in their debt.

Patricia Clarke



To donate to the Fire Fighters Charity, please see
www.firefighterscharity.org.uk

To Donate to the British Heart Foundation, please see www.bhf.org.uk

For Instructions on the use of a Defibrillator please see
www.sja.org.uk/first-aid-advice/how-to-use-a-defibrillator/

Mobile Library Timetable

The **Mobile Library** on the 4th Friday in the month as follows:

12.05-12.20 Grove Avenue **12.25-12.40** Perrie Drive **13.15-13.30** Village Hall

Enquiries: 01905 822722 or emailing mobilelibraries@worcestershire.gov.uk

Wednesday over 60s Club

We had great fun playing with bubbles at our June meeting (held on third). Our guest was Dr Bob King who entertained us with the magic of bubbles. Bob gave us an insight to the history and science behind making good bubbles. Three key elements are having good juice, wand, and weather. We then went on to see various bubble shapes and sizes and a few of our members had the opportunity to be encased in one. We all had an enjoyable afternoon. On concluding business matters on proposed speakers and trips, we rounded the afternoon off with Tea, Coffee and Cake, and our usual monthly raffle.

Our next Trip is planned for 15th July, when we will be visiting Rugby Garden Centre. The trip cost will be £15 and non-members are welcome. If your interested is coming on the trip, then please call Pam on 07966 871862.

The Club meet on the first Wednesday of the month, our next meeting our will be on 1st July, at the Village Hall @ 2.30pm, where our guests will be Campden Home Nursing.

Honeybees W.I. May Meeting

Our May meeting was our A.G.M, with area advisor Sue White coming to chair the evening. The President and Committee were all re-elected and the yearly resolutions voted on. Business over ,our speaker for the evening was Sue Ablett, who gave us an exciting journey through the Himalayas entitled "Darjeeling and the Last Kingdom".

With video backing Sue described how her journey began in Calcutta, which she summed up as " chaotic, colour, noise and mayhem" Formally the capital of India, Calcutta was created by the British, with buildings very like here in Britain. From there Sue travelled to Darjeeling which is the main tea growing area, over forty thousand people are employed on the plantations. The local people very friendly and everywhere Sue went, she was presented with garlands of flowers. Her last port of call was Bhutan, with less than a million population, and the only capital city which does not have traffic lights. Archery is the National sport and their only entry into the Olympic Games. Rhododendrons grow wild everywhere and the Tarkin is the National animal.

Sue flew home from Delhi, alongside Mount Everest, which she described as magical. An amazing journey and an extremely interesting talk.

Our next meeting is June 15th when Ian Pickering will be talking to us about the Weather Road Show.

Anyone interested in joining us will be most welcome, for more information check our Facebook Page or call 01386830517.

Parish Council News. Did You Know? Honeybourne Has 29 Bins!

You might be surprised to learn just how well served Honeybourne is when it comes to bins. Honeybourne Parish Council recently carried out a survey of bin provision right across the parish — and the good news is that wherever you walk in the village, you are never far from one. In total, we counted 29 bins spread across the whole parish, all of which are suitable for both general litter and dog waste, as permitted by Wychavon District Council. Here is a guide to where you will find them.

Station Road (6 bins)

Station Road is particularly well looked after, with six bins running the length of the road. Starting at the northern end, you will find a freestanding bin on the west grass verge opposite the Sycamore Drive junction, and another on the grass verge on Stephenson Way, next to the Stephenson Way road sign. Further along, there is a bin mounted on a lamp post opposite the junction with Dudley Road. Continuing south, you will find a bin on a short post on the grass verge between All Things Wild Nature Centre and Shepherd Walk, and another next to the zebra crossing. At the crossroads of Station Road, High Street and Stratford Road, there is a freestanding bin on the grass area near the village bench.

Stratford Road and the Cemetery (4 bins)

The HPC Cemetery is accessed via a short access road off Stratford Road. In the cemetery parking area you will find a post-mounted bin and a freestanding bin, and there is a further freestanding bin just inside the cemetery gate itself. A bin has also been ordered for the entrance to footpath HY-527 on Stratford Road, opposite the Mickleton Road junction, and is awaiting installation by Wychavon District Council.

Harvard Avenue, Westbourne and Grove Avenue (6 bins)

The estate roads to the east of Stratford Road are well catered for. On Harvard Avenue, a bin is mounted on the bus stop post close to the open space. Over on Westbourne, you will find two freestanding bins next to the play area, as well as a green post-mounted bin on the grass verge. At the junction of Westbourne and Grove Avenue there is a freestanding bin on the grass verge, and at the junction of Grove Avenue and Stratford Road you will find another next to the bench by St Ecgwin's Church noticeboard.

High Street (2 bins)

On the High Street, look out for a mounted bin next to the defibrillator unit — you will recognise it by the former red telephone box near No. 40 High Street. Further along towards Brick Walk, there is a freestanding bin on the grass verge at the junction.

Bretforton Road — Elm Green (2 bins)

A mounted bin sits near the Parish Council's No Parking sign, and a freestanding bin is located at the Gloster Ades Road junction corner of the green.

Honeybourne Parish Council

29 public bins across the parish



All bins accept general litter and dog waste

Brick Walk and The Leys (5 bins)

The Leys playing field is one of the best-served areas in the parish — perhaps not surprising given how many residents use it! In the parking area at the entrance to The Leys on Brick Walk you will find both a freestanding bin and a mounted bin. Inside The Leys itself there are two further freestanding bins, one on each side of the yellow self-closing gate leading into the play area, and a post-mounted bin at the entrance to footpath HY-543, alongside the hedge next to the play area.

School Street (2 bins)

At the junction of High Street and School Street, there is a freestanding bin next to the noticeboard — handy for the school run! A mounted bin can also be found outside Honeybourne Primary Academy on School Street.

Grange Farm Drive (1 bin)

On Grange Farm Drive, a mounted bin can be found near the Parish Council noticeboard and the Village Hall.

Weston Road (1 bin)

Weston Road, which is the continuation of Station Road heading south, is also well served. A post-mounted bin can be found at the five-bar gate entrance to footpath 553(B).

So there you have it — 29 bins right across the parish, so there is always one nearby wherever you are walking. Please do make use of the facilities on offer and help us keep Honeybourne looking its best. **CLlr Heath Jobs Chair Honeybourne Parish Council**

Members of Honeybourne Parish Council

Heath Jobs (Chair) 07375085116

Balbir Dubb (Vice-Chair) 07795670707

Andrew Attridge	01386 830744	Amy Mathias	07956076271
Graham Clelland	01386 832500	Stephen Sidwell	07815311432
Colin Clear	07702105737	Sandra Walsh	07714237336
Judith Mellor	07770983522	-	

Clerk contact details: Mobile: 07951 429652 clerk@honeybourne-pc.gov.uk

Wills, Trusts, Lasting Powers of Attorney and more!



Over 10 years experience. Full member of the highly regarded and globally recognised Society of Trust and Estate Practitioners (STEP).

Fixed fees & fully insured

Call **Michelle** on **07516298125** or email **michelleestateplanner@outlook.com**



HONEYBOURNE ALLOTMENT GARDENS

Plots Available — Come and Grow With Us!

Grow Your Own

Is there anything more satisfying than stepping outside, picking your own vegetables, and knowing exactly where your food has come from? If you have ever thought about having an allotment, now is a perfect time to take the plunge — because plots are currently available at Honeybourne Allotment Gardens.

Whether you are an experienced grower or a complete beginner, an allotment offers something for everyone. There is the simple pleasure of getting your hands in the soil, the reward of watching seeds become something you can actually eat, and the quiet satisfaction of a productive afternoon outdoors. Nothing beats the taste of a tomato you have grown yourself, or pulling up carrots that were in the ground just an hour before they reach the dinner table.

But it is not just about the produce. Allotments bring people together. Our plot holders are a friendly and welcoming bunch — always happy to share tips, offer advice, or simply have a chat over the fence. You will find yourself swapping ideas with neighbouring plot holders, sharing surplus courgettes (there are always surplus courgettes!), and becoming part of a like-minded community of people who share a love of growing.

Honeybourne Allotment Gardens is a well-established site managed day-to-day by the Honeybourne Allotment Gardens Association, with support from Honeybourne Parish Council. Plots are available at an affordable annual rent, and the site benefits from facilities including water supply and secure access.

Thinking of joining us?

For more information or to enquire about plot availability, please contact the Parish Clerk at clerk@honeybourne-pc.gov.uk

Honeybourne Parish Council | honeybourne-pc.gov.uk



Honey Tots
Baby & Toddler
Group

Honey Tots Baby & Toddler Group



**THURSDAYS, 9.30-11.30AM
HONEYBOURNE VILLAGE HALL**

Stay, play & weigh!

**Bring your little one and their red
book and get baby weighed.**

**Thursday 9th July
August - closed
Thursday 10th Sept**





Dry Carpet & Low Moisture Upholstery Cleaning



dry-carpet.co.uk

Dry-Carpet



We now offer jet washing for your patios, drives and decks

- ✓ No drying time for carpets-can be used immediately after cleaning
- ✓ Suitable for all natural and synthetic carpets
- ✓ No risk to children, pets or those with allergies
- ✓ Low moisture upholstery cleaning to refresh your furniture
- ✓ Ideal for pet stains with built in deodoriser
- ✓ No risk of sticky residue

👉 Ideal for carpets with underfloor heating or floor power outlets
01386 662306 info@dry-carpet.co.uk



Stuart Brown PAINTING & DECORATING


**YOUR LOCAL PROFESSIONAL
PAINTER & DECORATOR.
DOMESTIC & COMMERCIAL**

Interior Decorating // Exterior Decorating
Wallpaper Hanging // Wall Panelling
Dustless Sanding // Fully Insured
Free Quotations

Contact me today for a free quote.

07837 919 323

stuartbrownpainting@outlook.com

 Find us on Facebook:
Stuart Brown Painting & Decorating

June Wildlife in Honeybourne Churchyard

On June 14th the congregation at Honeybourne's family service discovered the wildlife of the churchyard as part of the Caring for God's Acre week. Everyone had a wonderful time exploring the in the sunshine. The highlight was finding a very small frog! The bees were busy on many flowers. Other wildlife spotted included a centipede, red and black ants, woodlice, bees, a Ringlet butterfly, a Meadow Brown butterfly, Jackdaws, and a Blue Tit. Many flowers and plants were found, including Self Heal, Cinquefoil, Bindweed, White Clover, White Byrony, Hawthorn, Bramble / Blackberry, as well as common daisies and Buttercups. Lots of birds were heard, too, including a Wren, Blackbird, Robin, Jackdaws, Chiffchaff, Blackcap and a Whitethroat. It is amazing what's in the churchyard: all these were seen and heard in the space of 15minutes

Gardening Tips for July

July is usually one of the warmest months of the year, bringing both rewards and challenges for gardeners. Regular watering, weeding and harvesting will keep gardens looking their best throughout the summer.

Water Wisely

Water plants thoroughly rather than little and often. Early morning or late evening is the best time to reduce evaporation. Pay particular attention to hanging baskets, containers and greenhouse plants, which can dry out very quickly during hot weather.

Deadhead Summer Flowers

Continue removing faded blooms from roses, dahlias, geraniums and other flowering plants. Regular deadheading encourages more flowers and keeps displays looking attractive.

Harvest Fruit and Vegetables

Many crops are now ready for picking. Keep harvesting courgettes, beans, peas, lettuce and soft fruits regularly to encourage further production. Lift garlic and shallots once the foliage starts to yellow.

Feed Hungry Plants

Tomatoes, cucumbers, peppers and flowering baskets benefit from regular feeding with a high-potash fertiliser. Follow the manufacturer's instructions and avoid overfeeding.

Keep Weeds Under Control

Warm temperatures encourage rapid weed growth. Hoe on dry days and remove weeds before they have a chance to set seed.

Look After the Lawn

Raise mower blades slightly during dry spells to avoid stressing the grass. Brown lawns will usually recover when rain returns. Water newly laid turf if necessary.

Greenhouse Care

Ensure good ventilation by opening doors, vents and windows. Damp down greenhouse floors on hot days to increase humidity and help prevent red spider mite infestations.

Take Cuttings

July is an excellent time to take cuttings from many shrubs and perennials, providing free plants for next year.

Watch for Pests and Diseases

Keep an eye out for aphids, slugs, powdery mildew and tomato blight. Early action can prevent problems from spreading.

Enjoy the Garden

Above all, take time to sit back and enjoy the fruits of your labour. Summer gardens are at their peak, providing colour, fragrance and a haven for wildlife.





SUMMER DISCOUNTS

Day passes to All Things Wild are discounted all summer long in support of the government's summer savings scheme!

Book your tickets now by scanning the QR or visiting www.allthingswild.co.uk



90+ Animal Species | 30+ lifesized Dinosaurs | Dinosaur Train | Go Karts | Soft Play | and more included in your day pass

Discounted tickets run from 25/6 - 1/9

Reformer + Mat + Live + Online

Do you want to try Pilates?



STUDIO 113

Pilates will improve your posture, make those niggling aches and pains go away whilst strengthening your core and improving flexibility and mobility

Group Pilates classes are held at Honeybourne Village Hall on Mondays at 9am, Tuesdays at 6pm, Wednesdays at 8.45am & Thursdays 6.30pm.

PLUS!! We now we have a men's class on Wednesdays at 7 pm

1 on 1 reformer and Group Reformer+ classes are held in our well equipped studios in Mickleton

Scan To See our Reformer+ Studio

nicky@studio113.uk - 01386 662306 -
07570 023535 - www.studio113.uk





THATCHED TAVERN

· Honeybourne ·

www.thatchedtaVERN.co.uk

Monday Closure

From 6th July

Kitchen is closed all day

Bar will be open from 4pm.



Fish & Chip Tuesdays

Every Tueaday
Two portions of our fish & chips
for £25.00!



Blue Light Discount

Monday- Friday
15% off food
£10.00 Pizza



Quiz Night

Sunday 26th July
7:30pm



Open Mic

Wednesday
8th July
7pm



Live Music

Friday 24th July
7:30pm



BOOKINGS@THATCHEDTAVERN.CO.UK

01386 834273

FOLLOW ON OUR SOCIALS TO KEEP UP TO DATE WITH OUR LIVE ENTERTAINMENT & SEE OUR MOUTH WATERING FOOD!



@thatched_tavern



ThatchedTavernHoneybourne

A J HICKMAN ELECTRICAL

E: ajhickmanelectrical@aol.com

As a business our aim is to provide a **high quality** service so our customers receive **top quality** install and satisfaction on the whole service at a very **competitive price.**

- New Build Installs
- Rewires
- Fuseboard Upgrades
- Additional Power Points / Lights
- External Lighting
- Any Aspects of Electrical Work
- Additional BT Points
- Additional TV Points

Electrical Safety Register

incorporating
ELECSA + ECA
Certification Ltd



TEL: 01386 831258

MOB: 07976 052828

🏠 GLM Property Maintenance

- Traditional Window Cleaning
- Dry Stone Walling
- Fascias & Gutters (Repairs & Renewal)
- Driveways & Patios (Installation & Cleaning)
- Roof & Solar Panel Cleaning
- Power Chimney Sweeping
- Cowl/Pot Fitting and Repointing
- Roofing & Flat Roofing
- Fencing & Landscape Gardening
- Rendering
- Hedge & Tree Cutting
- Rubbish Removals
- Painting Interior/Exterior
- Garden / House Clearances
- And much much more

No job is too big or too small!

Call for a free quote today!

07399 024702

GLMServices18@gmail.com

Fully Insured

Registered Waste Carrier

We're on Yell.com

Like us on Facebook @GLMServices18



Blocked Ears?

EAR WAX can be troublesome, causing sudden hearing loss, discomfort and itchiness - but it can be easily removed at the Cotswolds' friendliest treatment clinic located near Blockley.

The Willows

NORTH COTSWOLDS EAR HYGIENE CENTRE
Unit 47, Northwick Business Centre
Blockley, Moreton-in-Marsh, GL56 9RF

Book Online: www.earhygienist.co.uk
Phone: 01386 701650
Issy@earhygienist.co.uk

Evergreen Garden Maintenance

Mowing, Hedge Cutting
Tree Pruning, Turfing etc.

No job to small.
References available.

Garden Clearance Service.

FOR A FREE QUOTE

Please phone Tony

T: 01386 854797
M: 07752
613814



CAMPDEN HOME NURSING

1990 **35** 2025
YEARS

of hospice care at home

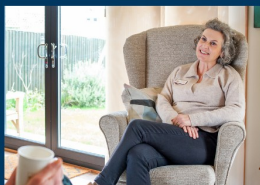
DID YOU KNOW LOCAL CHARITY CAMPDEN HOME NURSING PROVIDES HONEYBOURNE RESIDENTS...?

WEEKLY LOTTERY



A Little Play, a Lot of Care

- **End-of-life nursing care** and support in people's own homes by dedicated nurses
- **Bereavement counselling** and support for adults and teenagers
- **Play therapy** for children aged 4 - 13
- **Wellbeing activities** and community workshops
- **Volunteering opportunities** at our charity shop, gardening or support at Jecca's House



Join our weekly lottery for just £1 per week to win £250,000 and support us!

01386 840505 info@campdenhomenursing.org
www.campdenhomenursing.org Charity 1178423



FUTURE EVENTS

Movie Night – Mother's Pride 18th July @ 7:30pm

Country Music night – 4th July - tickets can be purchased online

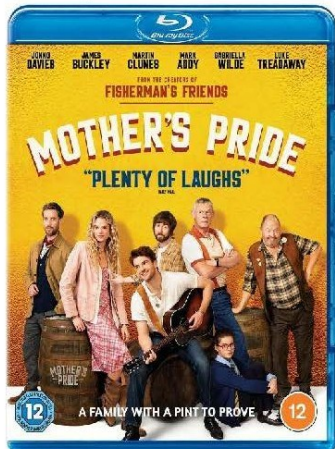
Gin Tasting Event – Date to be confirmed ☺

Monday	Tuesday	Wednesday	Thursday	Friday	Saturday	Sunday
Pilates with Nicky 9am – 10 am ~ Fitness with Jae 10:30am – 11:30am	Yoga with Jae 10am – 11 am	Pilates with Nicky 8:45am – 9:45am ~ Art Group 10am – 12:30pm	Coffee morning 9:30am-12:00pm ~ Embroidery Club 9:30 – 13:30 2 nd July ~ Toddler Group 9:30am – 11:30am	Gentle Yoga 9:45am – 10:45	Zumba with Lesley 9.30am-10.30am	
		Wed Club 2:00pm – 4:00pm 1 st July	Senior Stretch Class 1pm- 3pm		Movie Night Mother's Pride 7:30pm 18th July	
Kids Theatre Group 3:45pm – 5:45pm				Healthy Worcestershire 2:00pm – 4:00pm		
WI – 20 th July 7:00pm-10:00pm	Pilates with Nicky 6:00pm- 7:00pm	Men's Pilates with Nicky 7.00pm - 8.00pm	Pilates with Nicky 6:30pm – 7:30pm ~ Life Drawing 16 th July 7:45pm – 10:00pm	Short Mat Bowls Group 7.30pm-9.30pm		

All classes require booking to attend.

Honeybourne Village Hall

July Film Night



Saturday 18th July

Doors open 7pm

Tickets £5.00 pp

Refreshments and Raffle on the night

Tickets available on the night or online at

www.honeybournevillagehall.org

From the team behind 'Finding Your Feet' and 'Fisherman's Friends' comes Mother's Pride, a story about the Harley family who after losing their matriarch, must come together to save their pub and village through the art of beer-brewing.

12A

HONEYBOURNE VILLAGE

HALL PRESENTS...

**AN EVENING OF
COUNTRY/FOLK MUSIC
WITH...**

THE YIPPEE

YI YAYS

**BRINGING LIFE TO COUNTRY CLASSICS
BY THE LIKES OF JOHNNY CASH,
KENNY ROGERS AND MORE, ALONG
WITH FOLK REELS & JIGS**

Licensed bar on the night

**SATURDAY 4TH JULY
DOORS 7PM**


TICKETS £10

SCAN QR CODE OR VISIT

WWW.HONEYBOURNEVILLAGEHALL.ORG



AT: HONEYBOURNE VILLAGE HALL, EVESHAM



WHEN DID
YOU LAST HAVE
A FINANCIAL
HEALTH CHECK?

Would you know if:

- You could have a capital gains tax liability?
- You could access your pensions flexibly?
- Your pension fund is under performing?
- Your investments are providing the best return?
- You have an inheritance tax liability?
- You have sufficient cover in place to protect loved ones?

With a financial health check you could get the answers you need.

For a **FREE**, no obligation financial review, please contact me to arrange a suitable time for us to meet.

I'm happy to have initial discussions on the phone, via video call or face to face.

Karl Thorpe BA(Hons), DipPFS
Independent Financial Adviser

m. 07879 466385

e. karl.thorpe@afhgroup.com

www.afhwm.co.uk

AFH Wealth Management is a trading style of AFH Independent Financial Services Limited, which is authorised and regulated by the Financial Conduct Authority. www.fca.org.uk/register. Financial Services Register no. 216704. Registered in England and Wales. Company no. 04049180. Registered Office: AFH House, Buntford Drive, Stoke Heath, Bromsgrove, Worcestershire, B60 4JE. AFH Independent Financial Services Limited is a wholly-owned subsidiary of AFH Financial Group Plc (company no. 07638831). A5084-06/22-01



AFH wealth
management

Y is for Year

At different times of the year the altar frontal in churches is a different colour. The reason for this is the different seasons of the Church's year. The church's year runs on a slightly different time frame to an ordinary year, or to a tax year. It begins with Advent at the beginning of December, progresses through Christmas and Epiphany, to Lent. After that comes Palm Sunday, Good Friday, Easter, , Ascension Day, Pentecost (or Whitsunday), and then 'ordinary time' until the beginning of Advent.

The standardisation of four specific colours for specific seasons only occurred in the sixteenth century. Before then individual churches chose what colours to use when: one ninth century Irish treatise lists eight colours!

Today, there are four colours you will see on a church altar: white, purple, red and green. White is the colour for seasons of major celebration, such as Christmas or Easter, and these festivals last longer in the Church than the day itself, so white will still be in use at the end of January. Purple is used for seasons of preparation, so will be in use in Advent before Christmas and in Lent before Easter. Red is only used on a few occasions, for special saints and martyrs, and on Palm Sunday and Pentecost. Green gets used on all the other weeks, which are known as 'ordinary time'. These colours are used on altar frontals, and will also be used on some clerical garments such as stoles and chasubles, and for the cloth covering the Communion plate and cup on the altar at the start of a Communion service.

Plant Sale at St Egwin's Church

The weather forecast was dreadful for the afternoon of 6th June, but that did not deter you! The forecast was wrong and we had just one light shower, but it was chilly and really did not feel like June at all.

Thanks to those who arrived early to donate plants for us to sell, to those who helped set up the stalls and put up the bunting. The churchyard looked lovely for the 2pm start.

Special thanks to the family of the late Olwen Humphreys who kindly allowed us to take plants from her house and garden as well as the ceramic pots from her shed.

Our thanks also to Andrew Laing who also donated some lovely stone plant pots.

We are grateful to Adam at Honeybourne CoOp who gave us some carrier bags for our customers to use to carry away their purchases and to TOPS at Mickleton who donated some black plastic plant trays.

Above all, thanks to you for coming along to support the event. We were delighted that we made £135 for the Friends of St Egwin's Church charity, which put the money towards maintaining the fabric of the building.

See you next year!





Honeybourne Village Fete

Saturday 18th July, 11am-3pm

The Leys Playing field

Dog Show Classes - Waggiest tail, Prettiest female, Handsome Lad, Golden Oldie, Child Handler, Fancy Dress, Best treat catcher, Best Rescue, Cheekiest Puppy

Thank you to our dog show class sponsors - Cotswold Pet Cremation, Wickhamford Woofs, Bidford Paws Paddock, Lillys Dog Grooming, Tidy Tails Grooming, Cotswold Hound Haven, Duke & Co.

Produce show classes (Sponsored by Gooding Chartered Surveyors) - Best Adult Bake, Best Child Bake, Flower Display, Vegetable Animal (Under 12yo), Best preserve (jam/marmalade/chutney.)

All entries on the day, £1 per class.



Honeybourne Village Fete

Saturday 18th July, 11am-3pm
The Leys Playing Field WR11 7PG

Fun dog show	Chilli Eating Comp
Childrens Games	Grand raffle
Bouncy Castle	Craft stalls
Produce show	Tombola
Ice cream	Food & Drink

Raffle Prizes & Tombola items wanted. Please get in touch if you can help!

honeybournevillagefete@outlook.com

**Village Tombola collection week commencing
6th July 2026**

Volunteers needed! Please get in touch if you can help out at all.

Church Services - July 2026

	Pebworth	Dorsington	Honeybourne	Willersey
5th July Trinity 5			9.00 am Holy Communion (Traditional language)	10.00 am Morning Prayer (Modern language) & Baptism
12th July Trinity 6	11.00 am Holy Communion (Modern language)		11.00 am Family Morning Praise	9.00 am Holy Communion (Traditional language)
19th July Trinity 7			11.00 am Holy Communion (Modern language)	4.00 pm Prayer & Praise
26th July Trinity 8	11.00 am Family Service			10.00 am Morning Prayer (Modern language)
2nd August Trinity 9			9.00 am Holy Communion (Traditional language)	10.00 am Morning Prayer (Modern language)

Sidesmen, readers and intercessors at Honeybourne:

	5 th July	12 th July	19 th June	2 nd August
Sidesman	Sylvia Matthews	Teresa Banks	Sylvia Matthews	Teresa Banks
Reader	Teresa Banks	Anne Jones	Lawrence Schroeder	Elizabeth Rose
Intercessor	Minister	Minister	Minister	Minister

Vicar's Letter, 'Taking time to recognise, be thankful & love'

Have you ever lost something important?

Most of us have experienced that moment of realisation when a set of keys, a purse, a phone, or something precious is no longer where we expected it to be. When that happens, we begin to search. We look carefully, retrace our steps, and pay close attention to places we might otherwise overlook. When something matters to us, we recognise when it is missing.

This simple idea lies at the heart of two of Jesus' best-known parables in Luke 15. A shepherd realises that one sheep is missing from his flock and goes in search of it. A woman notices that one coin has been lost and sweeps her whole house until she finds it. These are not grand stories about kings and armies. They are stories about ordinary people doing ordinary things. Yet they reveal something important about God.

God sees what is lost, forgotten, overlooked, or vulnerable. The shepherd and the woman refuse to accept loss as inevitable. They search carefully and rejoice when what was missing is found.

These parables also have something to teach us about our relationship with God's creation. One of the challenges facing our world today is that we can become accustomed to loss. A field that no longer hums with insects. Fewer birds than we remember from our childhood. A stream, woodland, or coastline that is not as healthy as it once was. Often these changes happen gradually, and because they happen slowly, we stop noticing them.

Yet Scripture reminds us that creation matters deeply to God. In the opening chapter of Genesis, God looks upon creation and calls it good. Every creature, every plant, every landscape has value not simply because it is useful to us, but because it belongs to God and forms part of the wonderful world he has made.

The parables of the lost sheep and the lost coin remind us that attentive love begins with noticing. The shepherd noticed. The woman noticed. And because they noticed, they acted. It is often said that we protect what we love. But perhaps an even deeper truth is that we can only love what we know, and we only truly know what we take time to properly see.

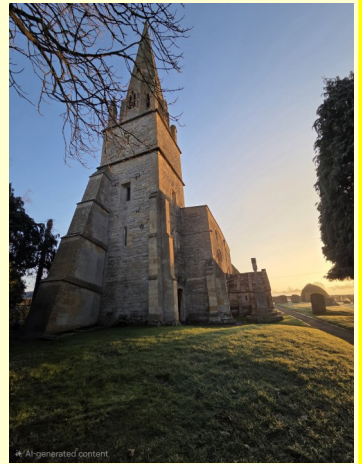
That can be difficult in a culture shaped by speed, efficiency, and constant distraction. Yet Jesus' stories invite us to slow down and pay attention. Rather than becoming overwhelmed by global statistics and environmental challenges, we can begin with what is close at hand. We can notice the birds in our gardens, the flowers in the fields, the changing seasons, and the rich variety of life that surrounds us.

Taking time to properly see may seem like a small thing, but it is often the beginning of gratitude, care, and action. So this month, when you are out and about - walking the dog or just for a summer stroll - take time to recognise, to be thankful and to love God's creation. Jesus notices and searches, and rejoices when what is lost is found. May we become people who see too: people who delight in God's creation, care for what has been entrusted to us, and never lose sight of the value of every part of the world God has called good.

Rev'd Jon Barwood

Tel: 07777 148880

Email: jonbarwood@btinternet.com



Honeybourne Bereavement Café

An opportunity to meet others in a similar situation offering mutual support and friendship within a safe place.

When: 1st Saturday of each month

Time: 9.30am-11.30am

**Where: The Gate Inn
Honeybourne, WR11 7QJ**

Free of charge, inc. refreshments



We are also offering a 7-week Bereavement Journey Course, dates to be confirmed.

 eveshamreferrals@svp.org.uk

 0777 6827112

Kindly supported by Worcestershire CC and Wychavon Council



St Vincent
de Paul Society
England and Wales
Turning Concern into Action



wellbeing
in WYCHAVON

St Vincent de Paul Society (England & Wales): registered charity number 1053992
A company limited by guarantee in England and Wales 3174679



96 Stratford Road

96 Self Storage



Honeybourne

Secure. Flexible.
Right on your
doorstep.



New Location Now Open

- ✓ Flexible Terms
- ✓ Safe and Secure
- ✓ Transparent Pricing
- ✓ Residential/Trade Storage

contact@96storage.co.uk

[96storage.co.uk](https://www.96storage.co.uk)



Peter

Worcester & Wychavon

bluebird
care®

Helping your
dad live his
life. So you
can *live yours.*

We're here so your loved one can stay home, where they want to be. Where things are safe and familiar and they have the best chance to live a full and meaningful life.

Whether it's everyday companionship or everyday errands, Live-in Care or Home Care visits, our highly-trained Care Experts will give your loved one the support they need to live in the place they feel best: home.

See how we can *support you.*

It's good to
be home

Call us for a friendly chat on

01386 575800

Or email

worcesterandwychavon@
bluebirdcare
.co.uk

*Find
out more*



Martin Grinnell FUNERAL SERVICES

Evesham's only independent
funeral directors



Over 30 years
serving the local
community



- Professional Personal Service
- 24 Hour / 7 Days a Week
- Home Visits
- Private Chapel of Rest

Please contact us at any time
01386 422233

1 Bewdley Street, Evesham. WR11 4AD

Pet Portraits by Ella



Beautiful pencil drawings to capture your beloved fur baby. Whether its for a gift or for yourself, it's a wonderful way to cherish a pet forever. Perhaps it's a memory of a long-lost friend, a loyal companion or a recent new addition to your family. What ever the occasion let us help you to remember them always. For more information:

Email: carolegraves@btinternet.com Tel: 07733 045103



**REPAIRS - NEW ROOFS -
LEADWORKS - GUTTERING -
DOWNPIPES - CHIMNEY WORKS -
UPVC FASCIA & SOFFIT
REPLACEMENTS - VELUX WINDOW
INSTALLATIONS**

**CONTACT MARK FOR YOUR FREE
ADVICE AND ESTIMATE**

**HONEYBOURNE
ROOFING**

HONEYBOURNEROOFING.COM

**07597380773
HONEYBOURNEROOFING@GMAIL.COM**

As Time Goes By Memorials

Memorials that reflect a lifetime



NEW HEADSTONES & CREMATION STONES

A wide choice of
styles and finishes



RENOVATIONS

Restoring memorials
with care and
expertise



ADDITIONAL INSCRIPTIONS

Adding names, dates
and personal tributes



HOME VISITS

We come to you
with no obligation
and expert advice

Local
**FAMILY
RUN FIRM**



01527 550 505



www.astimegoesbymemorials.org.uk

astimegoesbymemorials@hotmail.com

FOLLOW US



HANDMADE & BESPOKE
FITTED INTERIORS
KITCHENS
FREESTANDING FURNITURE

Covering Worcestershire,
Warwickshire & The Cotswolds

Contact Us:

07531 046597
bespoke@aj-furniture.co.uk

aj-furniture.co.uk



Merstow Green Funeral Home



Kevin Bowen

Philip Tomlins

Martyn Jeynes

Proudly serving the Vale of Evesham and North Cotswolds since 2008

Merstow Green Funeral Home are here to support and guide you. We offer a friendly and professional service to families

Evesham

01386 49903

20 Merstow Green
WR11 4BD

- 24 - hour service
- Bereavement advice
- Home visits
- Private chapels of rest
- Floral Tributes
- Memorial Masonry
- Prepaid funeral plans

**Call us for immediate support, advice or to
arrange a home visit or to find out more about
our prepaid funeral plans.
We are here to help 24 hours a day.**



www.merstowgreen.co.uk





Support with personal care
and medications

Domestic help and companionship

Contact Telephone: 01386765102

info@medistaff24.co.uk


www.medistaff24.co.uk



CONSTRUCTION & GROUNDWORKS

 07497 950 391

 hello@bascontracting.co.uk

 [Bilbrough_and_sons_ltd](https://www.instagram.com/Bilbrough_and_sons_ltd)

 BAS Construction

MWS Aerial & Satellite ***Tel: 01386 833342***

- Freeview
- Freesat
- Radio and DAB
- Additional TV Points
- Additional Telephone Points

Free advice and quotations

CAI Member C. 1559

Member of the Worcester Trader
Register

www.mws-aerial-satellite.co.uk

email: info@mws-aerial-satellite.co.uk

Bella Hair

---- Unisex Salon ----

34A High Street, Honeybourne,
WR11 7PQ

Janette and Charlotte look
forward to meeting you!

Appointments - 01386 833470



the Fleece Inn



July at the Fleece Inn

Thu 2 July, 2-3pm – Tai Chi, £10

Wed 8 July, 7.30pm - Evesham Festival of Words:
Death of a Clown, with Robin Hillman, £15

Sat 11 July, 11.30am – Sit & Spin

Wed 15 July, 7pm – Sip & Paint Brush Party, £33

Thu 16 July, 2-3pm – Tai Chi, £10

Sat 18 & Sun 19 July – Living History Weekend

Sat 18 July – Bretforton Proms at the Rec, from 5pm

Mon 20 July, 7-9pm – Pottery at the Pub, £30

Thu 23 July, 2-3pm – Tai Chi, £10

Sat 25 & Sun 26 July – Living History Weekend

Sun 26 July, afternoon – Tabletop Magic in orchard

Open all day. Food served Mon-Sat 12-2.30 & 6-9pm, Sun 12-8pm

Pizza to eat in or takeaway - Fri & Sat

Folk Session every Thursday, all welcome.

Celtic Folk Session 3rd Wednesday, Sunday Folk on 2nd Sunday.

The Fleece Inn, The Cross, Bretforton, Worcestershire, WR11 7JE
01386 831173 info@thefleeceinn.co.uk www.thefleeceinn.co.uk

CPB PLASTERING

All aspects of plastering work:

Boarding, skimming,
rendering, screeding

Call **CARL BENFIELD**

Tel: 01386 831673

or 07717 201 950

Email: c-benfield@sky.com

SECURE & CONVENIENT STORAGE IN THE HEART OF THE COTSWOLDS

 **CONTAINERS DESIGNED FOR STORAGE**

 **8X MORE AIRFLOW**

 **EASY OPEN DOORS**

 **24/7 ACCESS + CCTV**

 **ASK ABOUT LONG
TERM DISCOUNTS**



*Your Trusted Partner for Secure, Flexible
& Local Storage Solutions*

www.cotswoldcontainerstorage.com
sales@cotswoldcontainerstorage.com
01789 330668

Concrete Works - Bretforton Road
Weston Subedge WR11 7QL



fairview

Your Local Builders Merchant

- Building Supplies
- Landscaping Supplies
- Sleepers
- Fencing
- Large range of aggregates
- Large Stock of paving & Walling
- TopSoil, Soil Improver
- Mushroom Compost & Bark
- Electrical & Plumbing Supplies
- Timber
- Decorating Supplies
- and much, much more

 **01386 833001**

BUCKLE STREET, HONEYBOURNE, EVESHAM, WORCES. WR11 8QE
WWW.FAIRVIEWTRADING.CO.UK | WWW.FAIRVIEWLANDSCAPINGSUPPLIES.CO.UK

Your Local Policing Team

Your local Neighbourhood Police Officers are PC Alex Prentice, PC Shaquille Lakin and PC Eve Marshall. Your local Police Community Support Officers are PCSO Jasmine Hill and PCSO Lee Stirling. Please feel free to contact the team via email, eveshamrn.snt@westmercia.police.uk.



The team is known as the Evesham and Pershore Rural Safer Neighbourhood Team. The team have 2 Facebook pages, 'Evesham Police' and 'Persore Police'. Please follow these to keep up to date with our activities and to see when our local drop in/engagement sessions are.

Speed Enforcement

TruCam has officially arrived in Evesham, Pershore and the surrounding villages. Your local Safer Neighbourhood Officers are now fully trained and equipped to use this speed enforcement device as part of ongoing efforts to keep our communities safe.

What you need to know:

TruCam is used to detect vehicles exceeding the speed limit
Offences are recorded digitally
Data is downloaded automatically
Anyone caught speeding will receive a ticket by post

Sign up to Neighbourhood Matters!

Drop-in sessions are held weekly around the patch. If you have anything you wish to discuss, please pop along to one of these sessions. These sessions are advertised on Neighbourhood Matters. Neighbourhood Matters is a free service which allows you to receive updates regarding crime in your area and also allows you to message your local officer. Take a look at the website for further information: <https://neighbourhoodmatters.co.uk/>.

Please feel free to come to any session you see advertised, you do not have to live in the village to attend. If you know people who do not have access to the internet, please feel free to share the information. The more people who know about these drop-ins, the better!

Reporting Incidents

Please remember to report crime and any incidents via 999, 101 or on the West Mercia website. Please do not email/ring/text individual officers if a crime has happened, this needs to be reported officially through the correct channels.

Going on Holiday—a couple of Security Tips.

Ask a neighbour to watch your home: Having someone check in can deter burglars and provide quick response if needed.

Use timers for lights and appliances to simulate occupancy

Friends of Honeybourne School

A huge well done to everyone who took part in Sports day and the colour run yesterday!! Thank you to the parent who brought the strawberries for us and thank you to Evesham Morrisons for donating the cream.

Thank you to our colour run sponsors - , **Honeybourne Roofing**, **Greenhill Autos** and **Stuart Brown Painting and Decorating**. Your support means more of the money raised can go towards improving the outdoor play equipment.

Thank you to everyone who helped out on the day, whether that was selling drinks or ice creams or throwing powder during the colour run!

Thank you to all the staff at Honeybourne Primary School for helping out and clearing up at the end!

The children had a fabulous time (as the pictures show!)

We'd love to see more pictures if you are happy to share any pictures you have of your own children!

We are still collecting sponsorship money!
Please bring any cash into school .



Honeybourne Walk.

A circular walk towards Bretforton. Distance: 3 miles flat terrain with 3 stiles. The walk starts at the footpath adjacent to Maple Close off the High Street. After 50 yards turn left into the corner of the field and cross the ditch bridge. You will pass alongside the underground sewage pumping station before crossing over a stile. Walk diagonally across the paddock and through the gate. Walk across the farmyard and through the next gate; into the next paddock and onto the gate at the far end. Take care to follow the waymarker on the gate post that directs you in the general direction of the brook on your right-hand side. Over a stile in the middle of the field and onwards, passing a dismantled stile, to the bridge over the Gate Inn brook.



Turn immediately left as you leave the bridge, and continue to follow the brook; through the large field gates, and continue to follow the brook until you meet another pair of large field gates leading back over the brook. Through the gates and you are now on the bridleway that passes through the gap in the field hedge opposite, and then follows the edge of the field until you reach the Bretforton Road.

TAKE GREAT CARE when crossing the Bretforton Road. This is a very fast road and visibility is not very good. Once across the road, follow the verge to your right. You will see an ancient county boundary stone (Worcestershire / Gloucestershire) near the hedge. Take the first track on your left (signpost is on opposite side of the road). Follow this track with the hedge on your left. After 200 yards the path moves across so that the hedge is now on your right,



Through the gap in the hedge and into the next field (full of poly-tunnels) where you will immediately fork right and follow the path between the strawberry tunnels. Immediately after the tunnels, turn left (almost back on yourself) to head back in the direction of Honeybourne, again between the strawberry tunnels. After the last strawberry tunnel walk into the corner of the field where you will find a bridge across the ditch into the next field. Immediately turn right and, after 15 yards, you will turn left onto path to the other side of this field. Turn right at the waymarker post and follow the field edge to the next waymarker post where you will turn left into the next field. Follow the edge of this field until you meet the Bretforton Road again. TAKE GREAT CARE. Turn right towards the village and down the High Street back to your starting point.

The Birds, the Bees, the Flowers and the Sneeze. By Honey Wildbourne

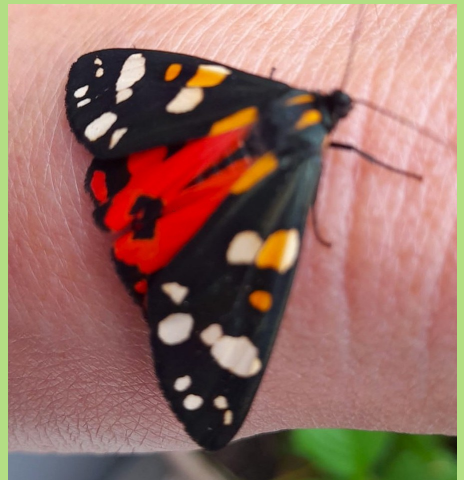
I like all the things in the title, and also the trees, (which I missed out for the purposes of a pun). At this time of year, I am happy to put up with slightly teary eyes and the occasional sneeze due to hay fever, if that's the price for being outside. As we know, all the pollen wafting around in the air has a purpose.

Wind fertilisation – known as anemophily - is the means by which many important plants reproduce, especially the grasses, including wheat, as well as many trees. As you can imagine, this method relies very much on chance, unlike insect pollination - posh name: entomophily - which occurs by a long-coevolved, and very accurate, delivery system. So many anemophilous plants have developed a scattergun approach to reproduction. To increase the odds they produce a lot, and I mean a lot, of pollen. Sneeze!

Unfortunately, given the extraordinary hot spell during May this year - the time when pollen is still developing in the tiny flowers, later to be released - the high temperatures have very likely negatively affected the viability of the pollen. This means, in the case of wheat crops, that grain set will be reduced. Not good news for farmers. The heat, however, doesn't have any effect on the proteins in pollen that cause allergies!

In other, warmth related news: a few days ago I spotted two Scarlet Tiger Moths (*Callimorpha dominula*) in my garden. In fact, to be precise, one flying around the garden, showing particular interest in my comfrey plants, and the other chilling out on my tomato plants in the greenhouse. My trusty insect book states that they are found in "damp areas like riverbanks, fens, marshes, floodplain meadows, and coastal cliffs" and that they are found only in the south and south west of the UK. Clearly this book, that I've had for several decades, is out of date, and doesn't reflect our now warmer summers.

They are a magnificent sight, with their bright scarlet under-wings, easily spotted as they are day-flying, especially in sunshine. The pair I spotted in my garden seem to have taken residence; they have been around for several days, and, as you will see by the photograph, seem pretty unbothered by my presence. This one was happy to pose, while I fumbled with my phone, for its portrait. One thing seems still to be accurate in my tattered old book; that is that the caterpillars of these moths feed on comfrey. I will wait, in the coming weeks, to see how many holes appear in their leaves!





Part of the Tesco Group

40 Stratford Road, Honeybourne, WR11 7PP


Tel: +44 7721277323

➤ One Stop Hours	Monday -Saturday	7 am - 10 pm
	Sunday	8 am - 8 pm
➤ Post Office Hours	Monday -Friday	7am - 5 pm
	Saturday	8 am- 1 pm
	Sunday	Closed

- Deposit Cash & Cheques directly to your bank: Free cash withdrawals: Get your money to travel card for your holidays: Pick up your foreign currencies, and many more services.
- Amazon Hub -Pick up your Amazon deliveries from here & drop off your returns.
- DPD Collection & Delivery.
- Great deals on Beers, Wines and Liquor: Birra Moretti 10 pack £13 : Budweiser 10 pack £12 : Budweiser 20 pack £17.50 : Bud light 10 pack £8 : Corona 12 pack £15 : Carlsberg Pilsner 18 pack £13 : San Miguel 10 pack :£13 : Madri Excepcional 10 pack £15 : Thatchers Gold 10 pack £10 : Cruzcampo 10 pack£14 : Stella Artois 18 pack £18 : Carlling 18 pack £17.50 : Coors 18 pack £17 : Inches Chider 10 pack £12 : Strongbow Original Cider 10 pack £10.75 : Any 3 x 660ml Beers £6.50 : Any 3 x pre-mixed £6.50: Cider 3 x £6.50
- Coffee Machine : All drinks £2.49: Slushy's: £1.99
- Local products include Cotteswold Milk : Norths Bakery Bread, Knights Provisions Bacon
- Bennett's Ice Cream : Flavour & Fire Sauces & Seasoning.
- Meal Deal for £4, Sandwich, Baguette or Pie + Drink + Snack.
- Safe, colourful, and fun-perfect for your little explorer!



SUPPORT YOUR LOCAL



Cotswold Pet Cremation

At Cotswold Pet Cremation we promise a personal and individual pet cremation service.

We treat every single animal as though they are a member of our own family; with care, respect and compassion.

Our approach is professional and personal in equal measures and we promise only individual cremations, thus ensuring the ashes safely returned are solely those of your pet.

We offer a trustworthy and safe pair of hands and we welcome you to bring your special pet to us directly when the sad time comes; this way, you can be reassured that you know exactly where your beloved pet is being looked after, and, also know the journey that brings them here; something we would want to know ourselves.

We understand how important it is for you to trust us with your pet, your memories and your friend.

Located just 5 minutes from Honeybourne, we are ideally placed to serve the local community.

Mobile: 07946 052 941 Landline: 01386 247 395
Lower Fields House, Weston Road, Bretforton, Worcestershire, WR11 7QA

www.cotswoldpetcremation.co.uk





Your local friendly garage

**For Servicing and Repairs to all Vehicle Makes
Cars to Light Commercial Vehicles**

**Batteries • Tyres • Exhausts
Wheel Balance • Wheel Alignment
Diagnostics • Puncture Repairs
And Much More!**

**Give us a call or drop in and see us.
We are here to help you safely on your journey.**

T: 01386 832157

**The Old Brickworks
Buckle Street
Honeybourne
Evesham WR11 8QE**



Opening hours

Mon to Fri: 8am - 6pm

Sat: 8am - 1pm